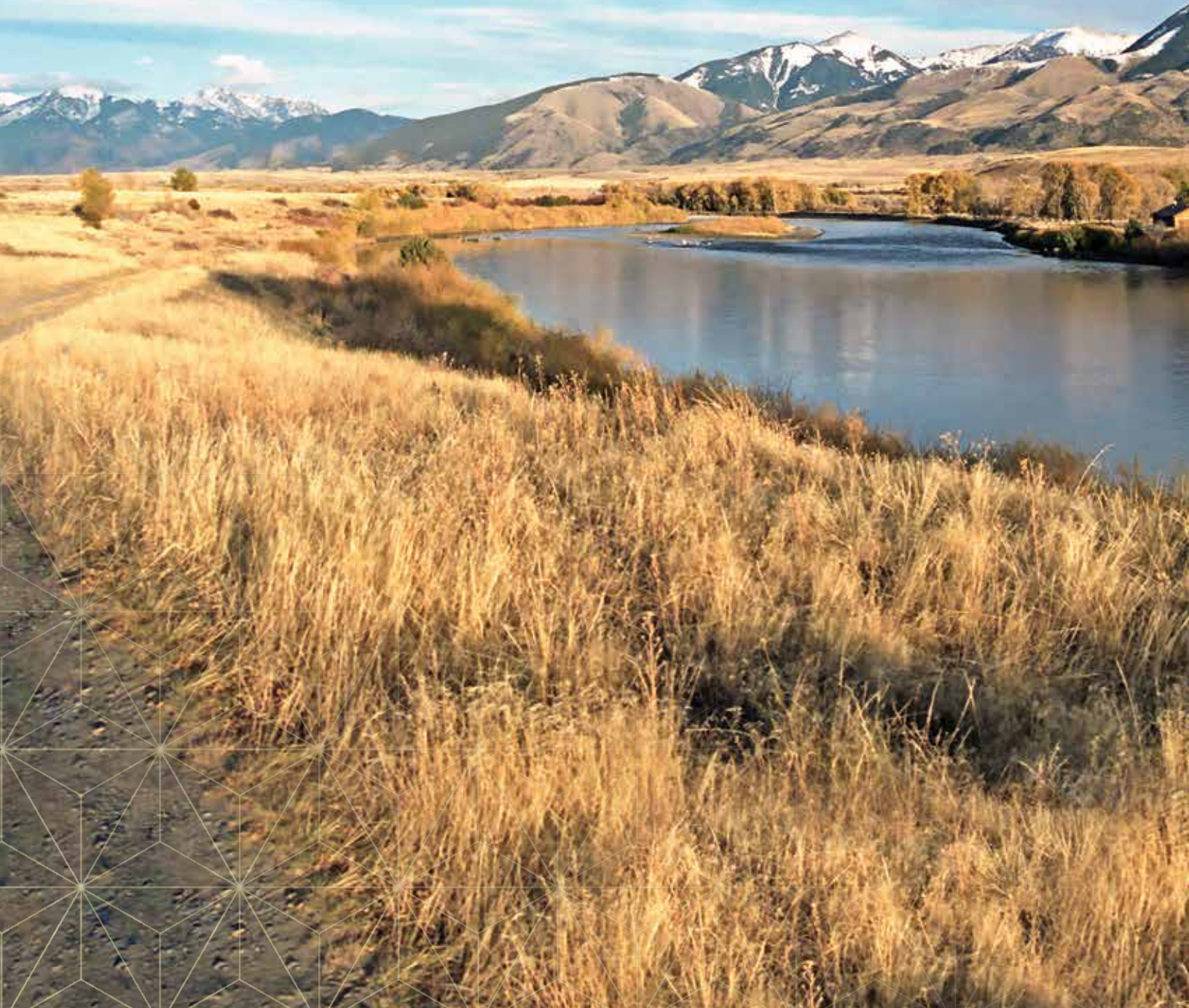


45th Annual
COLEMAN LIMOUSIN RANCH

Production Sale

TUESDAY, APRIL 4, 2023

1 p.m. MST - Five Valleys Livestock - Missoula, MT



45th Annual COLEMAN LIMOUSIN RANCH Production Sale

TUESDAY, APRIL 4, 2023
1 p.m. MST - Five Valleys Livestock - Missoula, MT

SELLING 100 YEARLING BULLS LIMOUSIN & LIM-FLEX

SPECIAL GUESTS

Delvin Heldermon, Special Assignment
DeRon Heldermon, Special Assignment
Jay Rost, DVAuction
Justin Mauler, Five Valleys Livestock
Jared Murnin, *Western Ag Reporter*

SALE MANAGEMENT

Kiley McKinna • (402) 350-3447
Wiley Fanta • (320) 287-0751
648 Sawgrass Trl. • Dakota Dunes, SD 57049
mcmarketingsales@aol.com
mcmarketingmanagement.com



SALE-DAY PHONES (406) 728-3052

Trent Coleman (406) 253-1113
Larry Coleman (406) 370-5349
Joel Fuhrmann (406) 531-1315
Kiley McKinna (402) 350-3447
Wiley Fanta (320) 287-0751

AUCTIONEER

Chisum Peterson (605) 730-4214

DVAuction
Broadcasting Real-Time Auctions

BID LIVE on the internet at DVAuction.com
Register at DVAuction.com one day prior to the sale.

SALE ACCOMMODATIONS

Hampton Inn (406) 549-1800
C'Mon Inn (406) 543-4600

VETERINARIAN

All bulls have been fertility tested by
Dr. Leroy Hoversland, Ronan, MT, (406) 676-0090.

CHECK OUR WEBSITE FOR UPDATED INFORMATION

- Scrotal Measurements
- Videos of Sale Lots

www.colemanlimousinranch.com

SCHEDULE

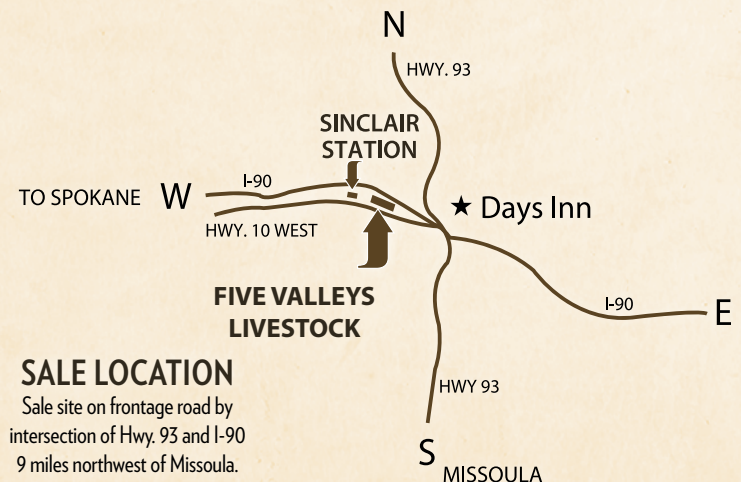
MONDAY, APRIL 3, 2023

All day viewing of cattle

TUESDAY, APRIL 4, 2023

11:30 a.m. - Lunch

1:00 p.m. - Coleman Limousin Ranch
45th Annual Bull Sale



SALE LOCATION

Sale site on frontage road by
intersection of Hwy. 93 and I-90
9 miles northwest of Missoula.

Dear Fellow Cattlemen,

All of us at Coleman Limousin Ranch welcome you to our 45th Annual Bull Sale. Thank you very much for your interest, support and confidence in our program. We feel the next few years will be exciting times in the cattle business. The United States cow herd is the smallest it has been in 50 years, which should result in record calf prices.

Our 2023 sale offering is just as powerful and consistent as in previous years. The bulls in this offering are sired by proven AI sires. Our cowherd is backed by generations of proven genetics. The bulls are fed a high roughage diet with enough energy to let their genetics express themselves. A nice benefit to our customers is our large sire groups, giving them a consistent set of bulls to choose from. The Limousin and Lim-Flex bulls in this sale offering are exceptional for performance and carcass traits.

We are excited to offer 11 sons of our 5 proven donor cows COLE Beauty 276Z, COLE Miss Production 104Y, COLE Miss X-Rated 354A, COLE Miss Zam 6112D and COLE Miss Zone 5110C.

The bulls have been semen tested, ultrasound scanned, and have complete performance records and EPDs. The bulls sell with a first season breeding guarantee (see page 2 for more details). We offer free nationwide delivery except states East of the Mississippi River. Bulls that are picked up on sale day will receive a \$100 per head discount. Bulls going to NV, UT and WY will be ready for delivery approximately five days after the sale, when Trich testing is completed.

The sale will be broadcast live by DV Auction. You can watch it on the internet and bid with DV Auction's "real time" internet bidding services. Videos of the bulls will be posted to our website around mid-March.

Plan to be with us for the sale event. We invite you to enjoy a tri-tip roast beef lunch on sale day starting at 11:30 am.

We hope this catalog's information will be helpful. Give us a call if we can be of further assistance to you. We look forward to having you with us April 4.

Sincerely,
Coleman Limousin Ranch
Larry & Anita
Trent & Melissa



COLE BULLS SELLING...

- 62 Limousin
- 38 Lim-Flex
- 6 Red
- 54 Homozygous Black
- 85 Homozygous Polled
- 46 Double Homozygous

Coleman Limousin Ranch



53717 Gallagher Road Charlo, MT 59824
Larry & Anita Coleman (406) 644-2300
Trent & Melissa Coleman (406) 644-2707
www.colemanlimousinranch.com

45TH ANNUAL BULL SALE

COLE

Our story began in 1970 when Limousin were brand new to North America. Muscle and efficiency is what drew us to the breed and what keeps us here today. Many have heard of the sire COLE First Down. He helped put the COLE prefix on the map.

Today our 4 Elite Focus Dams and 16 Focus Dams form the foundation of a strong cow base. These momma cows do their job by raising powerful bulls our customers demand and by replenishing our replacement pens.

Our family enjoys raising Limousin and Lim-Flex cattle. We've had a front-row seat in being a part of this breed's growth and our passion is as strong as ever. We look forward to another 50 years.

GENERAL SALE INFORMATION

TIME AND LOCATION: 1:00 p.m. Tuesday, April 4, 2023 The sale will be held at the Five Valleys Livestock, Missoula, Montana.

TRANSPORTATION: Commercial as well as private aircraft service is available to the area. Rental cars are available at the airport, or with advance notice your plane can be met at the airport.

TELEPHONE: Calls may be placed directly to the sale site by calling (406) 728-3052.

TERMS: Terms of the sale are cash, unless prior credit arrangements are established between buyer and seller. Settlements are to be made with the clerk immediately after the conclusion of the auction.

HEALTH: All cattle will be tested for Brucellosis within thirty (30) days of the sale. Health certificates will be provided with each lot sold.

DELIVERY: Free nationwide delivery to any central U.S. points. Bulls selling to states east of the Mississippi River will be charged \$500 per head. In some cases, this may require additional transportation by the buyer from a central location to their ranch. Every effort will be made to deliver to the buyer's ranch or to a convenient location as close to the buyer's ranch as possible. Buyers who do their own hauling will receive a \$100 per head credit.

FIRST BREEDING SEASON GUARANTEE: All bulls, 12 months of age and over at the time of sale, are guaranteed breeders. A bull is determined a breeder when he settles one or more females and/or passes a satisfactory semen test. Certificates of a satisfactory semen test will be provided at sale time for all bulls. In the first year, if a problem occurs with a bull, we will give you a suitable replacement or you will receive full credit minus the salvage value of the original bull toward another purchase in next year's sale. Please notify the seller of the bull as soon as possible if a bull is injured. This guarantee is a contract between the buyer and seller. All other parties are acting as agents or representatives only.

LIABILITY: Each animal will be at the buyer's risk as soon as sold, but will be cared for by the seller for a reasonable period of time. Every precaution will be taken for the welfare of the cattle sold. Neither owner nor sale manager can be responsible for any accidents, but every effort will be made to provide for the safety and comfort of those attending the sale.

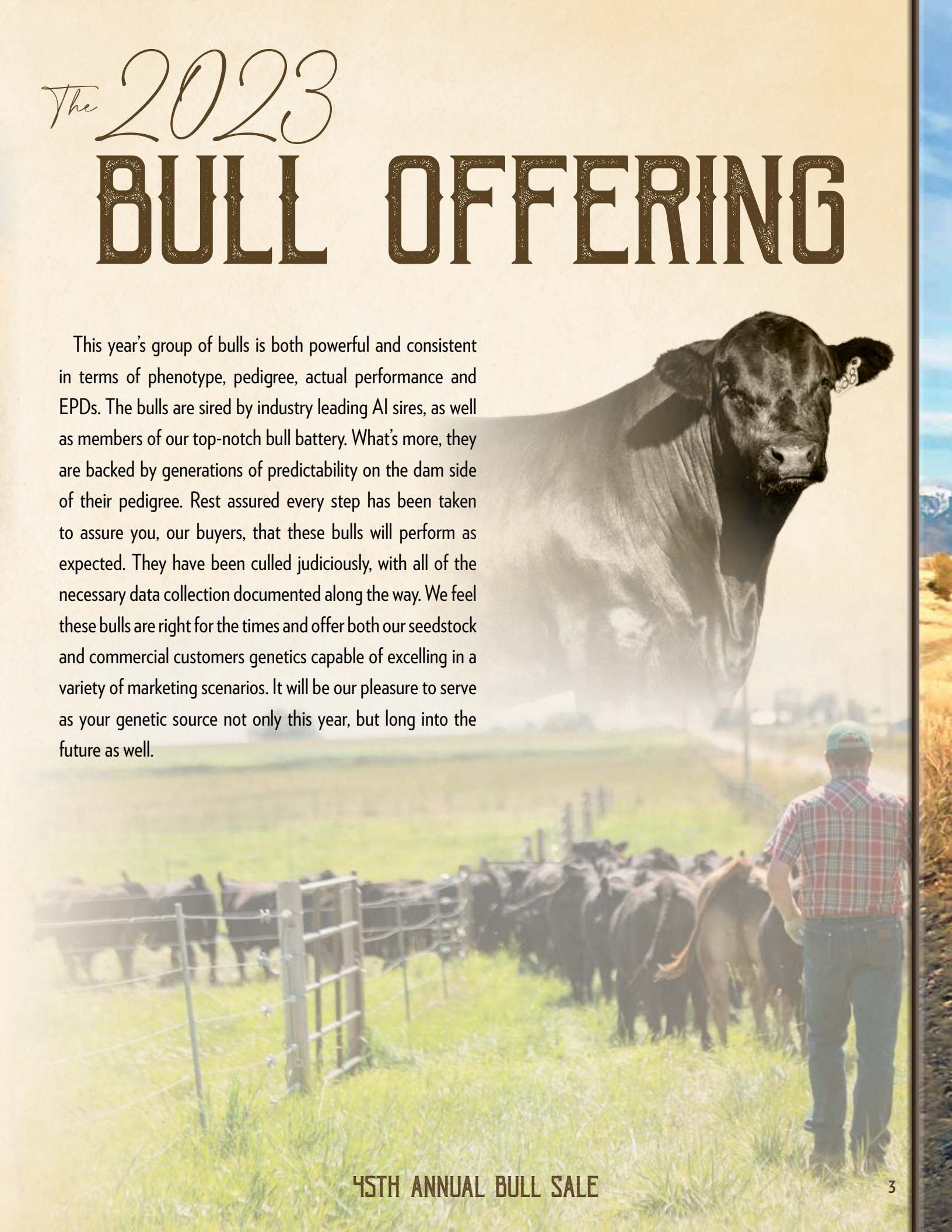
ANNOUNCEMENTS: Announcements made sale day take precedence over printed material in catalog. EPDs current as of 2/22/23.

RETAINED INTEREST: Selling full possession and one-half semen interest on all bulls in this offering.

The 2023

BULL OFFERING

This year's group of bulls is both powerful and consistent in terms of phenotype, pedigree, actual performance and EPDs. The bulls are sired by industry leading AI sires, as well as members of our top-notch bull battery. What's more, they are backed by generations of predictability on the dam side of their pedigree. Rest assured every step has been taken to assure you, our buyers, that these bulls will perform as expected. They have been culled judiciously, with all of the necessary data collection documented along the way. We feel these bulls are right for the times and offer both our seedstock and commercial customers genetics capable of excelling in a variety of marketing scenarios. It will be our pleasure to serve as your genetic source not only this year, but long into the future as well.





COLE KNOCKOUT 52K

PERCENTAGE(81/71) • HOMO POLLED (T) • HOMO BLACK (T)
2/12/2022 • COLE 52K • NXM2509494

AHCC BARN BURNER B907
CELL ENVISION 7023E
PBRS ZSA ZSA 246Z

AHCC WESTWIND W544
LVLS 9066U
TW FIRE N' ICE
PBRS ULL 854U
DHVO DEUCE 132R

ACT BW
80

COLE ZONE 89Z
COLE MISS ZONE 665D
COLE MISS PRODUCTION 183Y

COLE O2L
COLEMAN PRODUCTION 608
COLE MISS PUREPOWER 792T §GE-EPDs

ADJ WW
749

ADJ YW
1281

	CD	BW	WW	YW	MK	CM	SC	DC	YG	CW	RE	MB	\$MI
EPDs	14	.2	78	122	23	8	1.5	18	-.36	33	1.18	.06	59
% RANK	20	35	20	15	30	20	5	3	45	45	20	45	35

UFAT: 0.28 • UREA: 17.96 • UIMF: 4.38

What an exceptional way to lead off this impressive offering! COLE Knockout 52K combines a notable pedigree, a balanced EPD profile and an eye-catching phenotype. His sire, CELL Envision 7023E, has proven to transmit progeny that pair big data with stand-out phenotypes. CELL Envision 7023E is deceased but he continues to sire calves that sort to the top of astute breeding programs across the country. His dam is a beautiful patterned daughter of COLE Zone 89Z. On paper, he has numbers worth studying. He is a true curve bender when you study his breed-leading weaning weight and yearling weight, both ranking in the top 20% of the breed. He also ranks in the top 30% for milk, top 5% for scrotal, top 3% for docility, top 45% for carcass weight, top 20% for ribeye, top 45% for marbling and top 35% for mainstream terminal index. Aside from his numerical advantages, phenotypically he is heavy structured, big-bodied and level topped, with extra muscle expression while being free moving off both ends of his skeleton. What's more, he is homozygous polled and homozygous black. Don't miss out on your chance to own this remarkable individual that will predictably advance your breeding program to new heights.



COLE ENVISION 32J • Full brother to Lot 1
Sold in our 2022 bull sale.



COLE KODIAK 41K

LIM-FLEX(68/59.4) • HOMO POLLED (P-2) • HET BLACK (T)
2/9/2022 • COLE 41K • LFM2509490

AHCC BARN BURNER B907
CELL ENVISION 7023E
PBRS ZSA ZSA 246Z

COLEMAN JUNEAU 044
COLE MISS JUNEAU 351A
COLE 471P

AHCC WESTWIND W544
LVLS 9066U
TW FIRE N' ICE
PBRS ULL 854U
O C C JUNEAU 807J
COLEMAN DONNA 714
COLE MAGNUM 15M
COLE 801H

ACT BW
80

ADJ WW
808

ADJ YW
1423

GE-EPDs

	CD	BW	WW	YW	MK	CM	SC	DC	YG	CW	RE	MB	\$MI
EPDs	15	-.3	79	122	21	8	1.6	15	-.43	45	1.28	.11	62
% RANK	10	25	25	25	45	20	3	25	10	20	2	65	45

UFAT: 0.37 • UREA: 17.30 • UIMF: 3.24

Take note of this well-balanced individual that comes to you in a heavily muscled, black-hided, homozygous polled package. We think COLE Kodiak 41K does many things right. He is a highly usable and versatile CELL Envision 7023E son whose dam is a daughter of the popular Angus AI sire, Coleman Juneau 044. Visually COLE Kodiak 41K is phenotypically elite—wide based, stout featured and loaded full of red meat. Study his numerics and realize he, too, is a growth curve bender, ranking in the top 25% or better for CD, BW, WW, YW and CM. Couple that with his 808 Adj. WW., 1,423 Adj. YW and his 17.3 sq. in. ribeye scan, and you are left with a bull that can be used with great success in a variety of breeding scenarios. The earning potential is all here and we're excited to offer a bull of this nature and proven lineage. Bid with confidence, he is the kind of bull that can change a calf crop for the better.



COLE MISS XRATED 354A • Dam of Lot 3



COLE GENESIS 86G



COLE CADILLAC 05C

MATERNAL SIBS TO LOT 3

3 COLE KABOOM 74K ET

PERCENTAGE(81/70.3) • HOMO POLLED (P-1) • HOMO BLACK (T)
2/19/2022 • COLE 74K • NXM2508735

AHCC BARN BURNER B907
CELL ENVISION 7023E
PBRS ZSA ZSA 246Z

MRL X-RATED 014X
COLE MISS XRATED 354A
COLE MISS PRODUCTION 874U

AHCC WESTWIND W544
LVLS 9066U
TW FIRE N' ICE
PBRS ULL 854U
CTCA BUCKEYE BULL 8261U
MRL TASTE OF COUNTRY 790T
COLEMAN PRODUCTION 608
COLE 4142P

ACT BW
96
ADJ WW
776
ADJ YW
1414

	CD	BW	WW	YW	MK	CM	SC	DC	YG	CW	RE	MB	\$MI
EPDs	8	3.4	97	150	25	4	1.1	18	-43	50	1.42	.19	70
% RANK	85	95	1	1	20	85	20	3	35	10	2	30	5

UFAT: 0.53 • UREA: 15.40 • UIMF: 3.03

A Full sib to the \$40,000 COLE Homerun 51H, the top-selling bull in our 2021 Bull Sale. His sire, CELL Envision 7023E, has proven to transmit progeny that pair big data with stand-out phenotypes. His donor dam is COLE Miss Xrated 354A who has an impressive resume producing two other maternal brothers who are both notable AI sires and past sale highlights, COLE Cadillac 05C and COLE Genesis 86G. On paper COLE Kaboom 74K has numbers worth studying—take note of his breed-leading weaning weight and yearling weight—both traits rank in the top 1%. He also ranks in the top 2% for total maternal, top 20% for scrotal, top 30% for stayability, top 10% for carcass weight, top 2% for ribeye, top 30% for marbling and top 5% for mainstream terminal index. Aside from his numerical advantages, phenotypically he is heavily structured, big-bodied and level topped, with extra muscle expression while being free moving off both ends of his skeleton.



COLE KANSAS 4SK ET

LIM-FLEX(68/60.4) • HOMO POLLED (P-1) • HET BLACK (T)
2/11/2022 • COLE 45K • LFM2508734

AHCC BARN BURNER B907
CELL ENVISION 7023E
PBRS ZSA ZSA 246Z

AHCC WESTWIND W544
LVLS 9066U
TW FIRE N' ICE
PBRS ULL 854U

ACT BW
92

ADJ WW
727

COLEMAN PRODUCTION 608
COLE MISS PRODUCTION 104Y
COLE 50K

GAR PRECISION 1680
COLEMAN BLACKCAP 211
COLE FIRST DOWN 46D
JHLL MS BITTERROOT 041B **GE-EPDs**

ADJ YW
1304

	CD	BW	WW	YW	MK	CM	SC	DC	YG	CW	RE	MB	\$MI
EPDs	12	2.6	78	122	22	7	1.3	19	-23	39	.81	.31	67
% RANK	35	90	25	25	35	35	20	2	40	35	35	25	20

UFAT: 0.71 • UREA: 14.04 • UIMF: 3.84

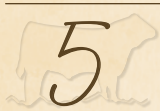
Another high-growth CELL Envision 7023E son that will catch your eye from across the pen. His donor dam is the successful COLE Miss Production 104Y, who was the high-selling female from our 2021 Discovery Sale, purchased by London Limousin Ranch in Arkansas. In addition to his phenotypic advantages, he ranks in the top 25% or better for WW, YW, SC, DC, MB and \$MI. He is the total package and one you will want to study long and hard. Make no mistake and be sure to have him on the top of your list sale day.



COLE MISS PRODUCTION 104Y • Dam of Lot 4



AHCC EARNING POWER 900E ET • Sire of Lots 5-8



COLE KEYNOTE 48K ET

PUREBRED(90/78.5) • HOMO POLLED (P-1) • HOMO BLACK (T)
2/12/2022 • COLE 48K • NPM2508739

MAGS ANCHOR
AHCC EARNING POWER 900E ET
LVLS 9066U

LH WAR HERO 195W
MGS XIPHOPAGOUS
LVLS FARMER JOHN 7428P
LVLS9066R

ACT BW
92

ADJ WW
761

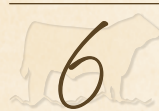
COLE 132T
COLE BEAUTY 276Z
COLE MISS KATYMAY 9105W

LESF ASPHALT 9N
CARROUSELS HAPPY GIRL
HC FINAL TIME 407
COLE 50K

GE-EPDs

	CD	BW	WW	YW	MK	CM	SC	DC	YG	CW	RE	MB	\$MI
EPDs	11	1.1	73	113	19	6	1.6	15	-34	40	.92	.34	67
% RANK	45	50	30	15	75	50	1	25	95	10	85	1	1

UFAT: 0.25 • UREA: 15.56 • UIMF: 3.03



COLE KINDLED 50K ET

PUREBRED(90/78.5) • HOMO POLLED (P-1) • HET BLACK (T)
2/12/2022 • COLE 50K • NPM2508740

MAGS ANCHOR
AHCC EARNING POWER 900E ET
LVLS 9066U

LH WAR HERO 195W
MGS XIPHOPAGOUS
LVLS FARMER JOHN 7428P
LVLS9066R

ACT BW
96

ADJ WW
741

COLE 132T
COLE BEAUTY 276Z
COLE MISS KATYMAY 9105W

LESF ASPHALT 9N
CARROUSELS HAPPY GIRL
HC FINAL TIME 407
COLE 50K

GE-EPDs

	CD	BW	WW	YW	MK	CM	SC	DC	YG	CW	RE	MB	\$MI
EPDs	12	3.1	76	125	19	7	1.6	15	-29	32	.86	.21	63
% RANK	40	90	20	5	75	35	1	25	>95	35	90	2	2

UFAT: 0.32 • UREA: 14.06 • UIMF: 4.01

These two full brothers can add a lot of value to your next calf crop. You will be impressed sale day by their muscle expression, clean lines and center capacity. Full siblings were sale highlights last year. They are sired by AHCC Earning Power 900E, the popular MAGS Anchor son, who effectively transmits growth and marbling. Their dam, COLE Beauty 276Z, is one of the most prolific and influential females we have ever had in our program and these two brothers are a great example of her consistent producing ability. Numerically they present exceptional growth paired with top-of-the-breed scrotal circumference and marbling. Bid with confidence - these herd sire prospects do many things right.



COLE BEAUTY 276Z • Dam of Lots 5-8



COLE KICKER S3K ET

PUREBRED(90/78.5) • HOMO POLLED (P-1) • HET BLACK (T)
2/13/2022 • COLE 53K • NPM2508741

MAGS ANCHOR
AHCC EARNING POWER 900E ET
LVLS 9066U

LH WAR HERO 195W
MGS XIPHOPAGOUS
LVLS FARMER JOHN 7428P
LVLS9066R

ACT BW
84

ADJ WW
697

COLE 132T
COLE BEAUTY 276Z
COLE MISS KATY MAY 9105W

LESF ASPHALT 9N
CARROUSELS HAPPY GIRL
HC FINAL TIME 407
COLE 50K

GE-EPDs

	CD	BW	WW	YW	MK	CM	SC	DC	YG	CW	RE	MB	\$MI
EPDs	11	1	71	116	19	7	1.6	16	-24	41	.88	.34	66
% RANK	45	50	35	15	75	35	1	15	>95	10	90	1	1

UFAT: 0.25 • UREA: 12.88 • UIMF: 3.36



COLE KNIGHT SSK ET

PUREBRED(90/78.5) • HOMO POLLED (P-1) • HET BLACK (T)
2/14/2022 • COLE 55K • NPM2508742

MAGS ANCHOR
AHCC EARNING POWER 900E ET
LVLS 9066U

LH WAR HERO 195W
MGS XIPHOPAGOUS
LVLS FARMER JOHN 7428P
LVLS9066R

ACT BW
98

ADJ WW
716

COLE 132T
COLE BEAUTY 276Z
COLE MISS KATY MAY 9105W

LESF ASPHALT 9N
CARROUSELS HAPPY GIRL
HC FINAL TIME 407
COLE 50K

GE-EPDs

	CD	BW	WW	YW	MK	CM	SC	DC	YG	CW	RE	MB	\$MI
EPDs	8	4.1	76	124	19	4	1.6	15	-25	36	.84	.33	67
% RANK	80	>95	20	5	75	85	1	25	>95	20	95	1	1

UFAT: 0.42 • UREA: 13.70 • UIMF: 4.08

Take a look at these two full brothers to lots 5 and 6. This mating is as predictable as they come as last year's sale was highlighted by multiple flush brothers. These brothers have everything stacked in their favor—elite pedigree, breed-leading numbers and eye-catching phenotypes. Bid with confidence. This mating is a proven and predictable as they come.



COLE KEEPSAKE 51K

PUREBRED(90/78.4) • HET POLLED (T) • HET BLACK (T)
2/12/2022 • COLE 51K • NPM2509493

MAGS ANCHOR
AHCC EARNING POWER 900E ET
LVLS 9066U

RUNL STETSON 850S
COLE MISS STETSON 1107Y
COLE 50K

LH WAR HERO 195W
MGS XIPHOPAGOUS
LVLS FARMER JOHN 7428P
LVLS9066R

JCL LODESTAR 27L
RUNL 72L
COLE FIRST DOWN 46D
JHLL MS BITTERROOT 041B

ACT BW
94

ADJ WW
763

ADJ YW
1180

	CD	BW	WW	YW	MK	CM	SC	DC	YG	CW	RE	MB	\$MI
EPDs	12	1	71	109	19	9	1.5	13	-41	43	1.26	.07	57
% RANK	40	50	35	25	75	10	2	60	85	5	25	10	10

UFAT: 0.34 • UREA: 15.66 • UIMF: 3.27

If you're searching for a big time growth bull, look no further than COLE Keepsake 51K and his 763 lb. 205-day weight. This explosive growth could be predicted due to his performance EPDs—his WW and YW both rank in the top 35% of the breed. This combination of presence and numbers project him to be the type of herd bull that produces well-balanced, polled, stout calves year in and year out.



COLE FORTUNE 71K

PERCENTAGE(78/69) • HOMO POLLED (T) • HET BLACK (T)
2/18/2022 • COLE 71K • NXM2509507

COLE CADILLAC 05C
COLE FORTUNE 12F
COLE MISS AUSTIN 3157A

COLE BUSINESSMAN 104B
COLE MISS BUSINESSMAN 647D
COLE MISS TRAVELER 0103X

ROMN TUFF ENUFF 103T
COLE MISS XRATED 354A
AHCC XPENSE ACCOUNT X516
COLE MISS TRAVELER 015X

RICHMOND YOGI SRD 7Y
COLE MISS PUREPOWER 809U
COLEMAN TRAVELER 797
COLE 100G

ACT BW
94

ADJ WW
866

ADJ YW
1350

	CD	BW	WW	YW	MK	CM	SC	DC	YG	CW	RE	MB	\$MI
EPDs	11	.3	79	126	27	6	.5	7	-27	34	1	0	56
% RANK	50	35	15	15	10	55	70	95	60	40	40	55	45

UFAT: 0.22 • UREA: 18.48 • UIMF: 1.40

Here is a bull that deserves some serious attention. Study his length of body, level top and hind quarter dimension. He is sired by COLE Fortune 12F, a go-to sire at Coleman Limousin. His dam is COLE Businessman 104B daughter with a great look. Numerically, COLE Fortune 71K has a well-balanced EPD profile highlighted by his growth and carcass traits. This homozygous polled herd sire should be put at the top of your list.



COLE KINSMAN 98K

PUREBRED(93/80.2) • HOMO POLLED (P-2) • HOMO BLACK (T)
3/1/2022 • COLE 98K • NPM2509576

COLE ARCHITECT 08A
COLE EXPLORER 22E
COLE MISS WINDFALL 126Y

DLVL XEROX 023X
COLE MISS XEROX 435B
COLE MISS STETSON 201Z

MRL X-RATED 014X
COLE MISS LODESTAR 826U
COLE WINDFALL 144W
COLE 64M

COLE THUNDER 110T
DLVL SKY 605S
RUNL STETSON 850S
COLE MISS NASA 006X

ACT BW
88

ADJ WW
824

ADJ YW
1277

	CD	BW	WW	YW	MK	CM	SC	DC	YG	CW	RE	MB	\$MI
EPDs	15	-1.1	79	116	17	8	.3	14	-52	40	1.23	-41	43
% RANK	15	15	10	15	90	20	80	50	50	10	30	>95	85

UFAT: 0.31 • UREA: 15.40 • UIMF: 2.68

Here is the heifer-safe herd sire prospect you have been scouting for. He posts a 15 calving ease EPD and a -1.1 birth weight EPD, both ranking in the top 15% of the breed. His sire is COLE Explorer 22E, the Architect son who continues to impress. His dam is COLE Miss Xerox 435B, a daughter of DLVL Xerox 023X. COLE Kinsman 98K can be utilized in a variety of different ways with the same outstanding results.



12 **COLE KINGDOM 69K**
 PERCENTAGE(76/67.5) • HOMO POLLED (P-2) • HET BLACK (T)
 2/17/2022 • COLE 69K • NXM2509506

HUNT CREDENTIALS 37C ET	HUNT TESTAMENT 40T	ACT BW
COLE GENESIS 86G	JKTW WHISKEY RIVER 985 W	90
COLE MISS XRATED 354A	MRL X-RATED 014X	ADJ WW
	COLE MISS PRODUCTION 874U	773
TMCK CAMDEN YARDS 195C	TMCK ALFALFA 35X	ADJ YW
COLE MISS CAMDEN YARD 881F	TMCK CASUAL AFFAIR 311A	1226
COLE MISS ZONE 665D	COLE ZONE 89Z	
	COLE MISS PRODUCTION 183Y %GE-EPDs	

	CD	BW	WW	YW	MK	CM	SC	DC	YG	CW	RE	MB	\$MI
EPDs	14	-1	78	115	33	9	.7	15	-.19	39	.93	.52	74
% RANK	20	15	20	25	1	10	60	25	75	25	45	3	2

13 **COLE KEEPER 110K**
 PERCENTAGE(81/71.7) • HOMO POLLED (P-2) • HET BLACK (T)
 3/4/2022 • COLE 110K • NXM2509584

HUNT CREDENTIALS 37C ET	HUNT TESTAMENT 40T	ACT BW
COLE GENESIS 86G	JKTW WHISKEY RIVER 985 W	82
COLE MISS XRATED 354A	MRL X-RATED 014X	ADJ WW
	COLE MISS PRODUCTION 874U	779
COLE ZAM 62Z	AHCC WESTWIND W544	ADJ YW
COLE MISS ZAM 6112D	COLE MISS LODESTAR 826U	1322
COLE MISS PRODUCT 3118A	COLEMAN PRODUCTION 608	
	COLE 4108P %GE-EPDs	

	CD	BW	WW	YW	MK	CM	SC	DC	YG	CW	RE	MB	\$MI
EPDs	14	1.1	92	138	30	7	.8	20	-.2	60	.97	.44	76
% RANK	20	55	2	4	2	35	50	1	70	1	40	10	2

UFAT: 0.41 • UREA: 16.96 • UIMF: 3.66
 Here is a bull with a rugged phenotype, capacity, growth and extra muscle expression. Study this bull's well-balanced numerics. He is sired by COLE Genesis 86G, the HUNT Credentials son that was the \$40,000 top seller in the 2020 Coleman Limousin Bull Sale. His dam is a maternal patterned TMCK Camden Yards 195C daughter that has done a great job. On paper, he is a real curve bender.

UFAT: 0.41 • UREA: 16.36 • UIMF: 3.03
 Another son of COLE Genesis 86G, the HUNT Credentials son that was the \$40,000 top sell in the 2020 Coleman Limousin Bull Sale going to Tubmill Creek Farms. Take note of his explosive growth, ranking in the top 2% for weaning weight and top 4% for yearling weight. He also ranks in the top 1% for docility and carcass weight and has breed-leading marbling.

14 COLE GENESIS 40K

PERCENTAGE(81/72.2) • HOMO POLLED (P-2) • HET BLACK (T)
2/9/2022 • COLE 40K • NXM2509489

HUNT CREDENTIALS 37C ET COLE GENESIS 86G COLE MISS XRATED 354A	HUNT TESTAMENT 40T JKTW WHISKEY RIVER 985 W MRL X-RATED 014X COLE MISS PRODUCTION 874U DHVO DEUCE 132R COLE 02L COLEMAN PRODUCTION 608 COLE 428P GE-EPDs	ACT BW 76 ADJ WW 746 ADJ YW 1159
---	--	---

COLE ZONE 89Z COLE MISS ZONE 552C COLE MISS PRODUCTION 985W		
--	--	--

	CD	BW	WW	YW	MK	CM	SC	DC	YG	CW	RE	MB	\$MI
EPDs	15	-1.2	77	116	29	9	.5	15	-.24	47	.96	.4	70
% RANK	10	15	20	25	4	10	70	25	65	10	45	10	5

UFAT: 0.33 • UREA: 15.40 • UIMF: 3.47
A heifer bull deluxe sired by COLE Genesis 86G. Besides his phonetical advantages on paper, he presents a negative birth weight figure paired with exceptional growth. His dam is a highly productive daughter of COLE Zone 89Z. His calves will be hot commodities. Don't miss this homozygous polled herd sire.



COLE FORTUNE 12F • Sire of Lot 17

15 COLE GENESIS 83K

LIM-FLEX(68/60.4) • HOMO POLLED (P-2) • HET BLACK (T)
2/22/2022 • COLE 83K • LFM2509513

HUNT CREDENTIALS 37C ET COLE GENESIS 86G COLE MISS XRATED 354A	HUNT TESTAMENT 40T JKTW WHISKEY RIVER 985 W MRL X-RATED 014X COLE MISS PRODUCTION 874U GAR PRECISION 1680 COLEMAN BLACKCAP 211 COLE FIRST DOWN 46D COLE 25R GE-EPDs	ACT BW 76 ADJ WW 699 ADJ YW 1181
---	---	---

COLEMAN PRODUCTION 608 COLE MISS PRODUCT 3126A COLE MISS FIRSTDOWN 9114W		
---	--	--

	CD	BW	WW	YW	MK	CM	SC	DC	YG	CW	RE	MB	\$MI
EPDs	15	-2.3	66	99	28	9	.6	19	-.12	47	.69	.48	68
% RANK	10	4	70	80	4	10	85	2	65	15	50	10	15

UFAT: 0.35 • UREA: 12.36 • UIMF: 3.53
If you came looking for an athletic, great-footed, red-hided, homozygous polled, heavily muscled feature bull that could be considered heifer safe, then COLE Genesis 83Z is the herd sire prospect for you. Study this bull's number profile to find a 15 calving ease direct EPD and a -2.3 birth weight EPD, paired with a 66 for weaning weight and 99 for yearling weight. Also, take note that he ranks in the top 2% of the breed for docility.

16 COLE FORTUNE 67K

LIM-FLEX(65/57.4) • HET POLLED (T) • HET BLACK (T)
2/17/2022 • COLE 67K • LFM2509504

COLE CADILLAC 05C COLE FORTUNE 12F COLE MISS AUSTIN 3157A	ROMN TUFF ENUFF 103T COLE MISS XRATED 354A AHCC XPENSE ACCOUNT X516 COLE MISS TRAVELER 015X GAR PRECISION 1680 COLEMAN BLACKCAP 211 COLE FIRST DOWN 46D COLE 148F	ACT BW 90 ADJ WW 753 ADJ YW 1227
--	--	---

COLEMAN PRODUCTION 608 COLE MISS PRODUCTION 522C ET COLE 141L		
--	--	--

	CD	BW	WW	YW	MK	CM	SC	DC	YG	CW	RE	MB	\$MI
EPDs	13	0	78	125	22	7	.2	14	-.13	39	.83	.19	62
% RANK	25	30	25	20	35	35	>95	35	65	35	30	50	45

UFAT: 0.32 • UREA: 16.16 • UIMF: 2.07
Be sure not to overlook this wide-bodied, fast-growing, thick-ended individual. He posted a 205-day weight of 752 lbs. He is sired by COLE Fortune 12F, a go-to sire at Coleman Limousin. His dam is another highly productive and maternal COLE Production 608 daughter. This herd sire comes with a well-balanced EPD profile and a great look. Don't miss out, add this sire to your bullpen to create highly marketable calves.

17 COLE FORTUNE 14K

LIM-FLEX(67/59.7) • HOMO POLLED (P-1) • HET BLACK (T)
1/23/2022 • COLE 14K • LFM2508852

COLE CADILLAC 05C COLE FORTUNE 12F COLE MISS AUSTIN 3157A	ROMN TUFF ENUFF 103T COLE MISS XRATED 354A AHCC XPENSE ACCOUNT X516 COLE MISS TRAVELER 015X MAGS ZODIAC COLE MISS REGIS 421B SCHURRTOP MC 2500 COLE 101G	ACT BW 94 ADJ WW 818 ADJ YW 1323
--	---	---

COLE 36D COLE MISS ZODIAC 0127H COLE MISS SCHURRTOP 7139T		
--	--	--

	CD	BW	WW	YW	MK	CM	SC	DC	YG	CW	RE	MB	\$MI
EPDs	11	2.3	80	128	25	7	.3	10	-.18	38	.92	0	56
% RANK	50	85	20	20	15	35	>95	85	50	40	20	85	75

UFAT: 0.40 • UREA: 17.06 • UIMF: 2.69
He combines a fresh pedigree with a fantastic phenotype guaranteed to catch your eye. His sire is COLE Fortune 12F, who needs little introduction to this offering and all the good he adds to his progeny. On paper, he has an 80 weaning weight EPD and a 128 yearling weight—both growth traits ranking in the top 20% of the breed. We think COLE Fortune 14K does a lot of things right.

18

COLE HALFBACK 23K

LIM-FLEX(71/62.7) • HOMO POLLED (P-2) • HOMO BLACK (P-2)
1/29/2022 • COLE 23K • LFM2509450

AHCC EARNING POWER 900E ET
COLE HALFBACK 08H
COLE MISS AUSTIN 499B

MAGS ANCHOR
LVLS 9066U
AHCC XPENSE ACCOUNT X516
COLE MISS WINDFALL 170Y

ACT BW
86

ADJ WW
746

ADJ YW
1295

TMCK CASH FLOW 247C
COLE MISS CASHFLOW 991G
COLE MISS ZONE 508C

MAGS ALI
TMCK NINA 17X
COLE ZONE 89Z
COLE MISS FIRST DOWN 8161

	CD	BW	WW	YW	MK	CM	SC	DC	YG	CW	RE	MB	\$MI
EPDs	10	1.5	86	141	24	6	1.5	15	-18	51	.95	.19	65
% RANK	65	65	10	5	20	55	5	25	50	10	20	50	30

UFAT: 0.42 • UREA: 13.78 • UIMF: 4.38

Take note of this well-balanced individual that comes to you in a heavily muscled, homozygous black, homozygous polled package. He is a highly usable and versatile COLE Halfback 08H son. His dam is sired by TMCK Cash Flow 247C. COLE Halfback 23K is well-balanced numerically. He ranks in the top 10% of the breed for both weaning weight and yearling weight. This Lim-Flex is ready to do the job.



19

COLE HALFBACK 27K

LIM-FLEX(71/62.4) • HOMO POLLED (P-1) • HOMO BLACK (P-2)
2/3/2022 • COLE 27K • LFM2509451

AHCC EARNING POWER 900E ET
COLE HALFBACK 08H
COLE MISS AUSTIN 499B

MAGS ANCHOR
LVLS 9066U
AHCC XPENSE ACCOUNT X516
COLE MISS WINDFALL 170Y

ACT BW
96

ADJ WW
805

ADJ YW
1396

TMCK CASH FLOW 247C
COLE MISS CASHFLOW 921G
COLE MISS XRATED 361A

MAGS ALI
TMCK NINA 17X
MRL X-RATED 014X
COLE MISS PRODUCTION 845U

	CD	BW	WW	YW	MK	CM	SC	DC	YG	CW	RE	MB	\$MI
EPDs	8	3.3	92	148	26	6	1.4	16	-15	59	1	.01	60
% RANK	90	95	2	2	10	55	10	15	60	3	15	85	55

UFAT: 0.35 • UREA: 15.58 • UIMF: 3.75

This herd sire prospect brings the pounds and muscle. Here is a big, stout, wide-made, ruggedly-designed purebred that comes to us in a heavyweight homozygous polled, homozygous black package. He is a highly usable and versatile COLE Halfback 08H son. Study COLE Halfback 27K numbers and find exceptional growth and maternal traits, plus a top 15% ranking for ribeye. Bid with confidence, this herd sire prospect does a lot right.



20

COLE HALFBACK 20K

LIM-FLEX(64/56.1) • HOMO POLLED (P-1) • HOMO BLACK (T)
1/27/2022 • COLE 20K • LFM2509448

AHCC EARNING POWER 900E ET
COLE HALFBACK 08H
COLE MISS AUSTIN 499B

MAGS ANCHOR
LVLS 9066U
AHCC XPENSE ACCOUNT X516
COLE MISS WINDFALL 170Y

ACT BW
80

ADJ WW
740

ADJ YW
1138

COLEMAN BRAVO 6313
COLE MISS BRAVO 998G
COLE MISS TOOLBOX 964W

COLEMAN CHARLO 0256
COLEMAN DONNA 714
COLE TOOLBOX 89T
HC CRYSTAL 201

	CD	BW	WW	YW	MK	CM	SC	DC	YG	CW	RE	MB	\$MI
EPDs	13	.6	76	120	20	7	1.4	16	-31	32	.95	-.06	53
% RANK	25	45	30	30	60	35	10	15	20	60	20	95	85

UFAT: 0.24 • UREA: 13.94 • UIMF: 3.14

If you like long-bodied, heavily muscled, functionally correct cattle that are homozygous polled, then watch for this exceptional son of COLE Halfback 08H. Back to Coleman Bravo on the dam side, 20K posts an impressive EPD profile for growth, scrotal, docility and ribeye area.



VIEW BULLS & VIDEOS
www.colemanlimousinranch.com



#21

21 COLE HALFBACK 22K

PERCENTAGE(79/69.1) • HOMO POLLED (T) • HOMO BLACK (P-2)
1/29/2022 • COLE 22K • NXM2509449

AHCC EARNING POWER 900E ET	MAGS ANCHOR	ACT BW
COLE HALFBACK 08H	LVLS 9066U	84
COLE MISS AUSTIN 499B	AHCC XPENSE ACCOUNT X516	
	COLE MISS WINDFALL 170Y	ADJ WW
CELL ENVISION 7023E	AHCC BARN BURNER B907	682
COLE MISS ENVISION 934G	PBRS ZSA ZSA 246Z	
COLE MISS JUNEAU 5120C	COLE JUNEAU 60A	ADJ YW
	COLE MISS AUSTIN 3135A	1156

	CD	BW	WW	YW	MK	CM	SC	DC	YG	CW	RE	MB	\$MI
EPDs	12	.2	77	127	21	7	1.7	17	-.29	46	1.05	.14	61
% RANK	35	35	20	10	50	35	2	10	60	10	35	35	25

UFAT: 0.29 • UREA: 15.48 • UIMF: 3.43

This bull has an absolute stand-out phenotype that deserves some serious attention. Study his length of body, level top and hind quarter dimension. His dam is a daughter of the great CELL Envision 7023E. Numerically, COLE Halfback 22K has a well-balanced EPD profile highlighted by his growth and carcass traits. This homozygous polled, homozygous black bull should be put at the top of your list. He will do big things for your next calf crop.



COLE HALFBACK 08H • Sire of Lot 22

22 COLE HALFBACK 32K

PERCENTAGE(85/74.7) • HET POLLED (T) • HOMO BLACK (P-2)
2/7/2022 • COLE 32K • NXM2509453

AHCC EARNING POWER 900E ET	MAGS ANCHOR	ACT BW
COLE HALFBACK 08H	LVLS 9066U	80
COLE MISS AUSTIN 499B	AHCC XPENSE ACCOUNT X516	
	COLE MISS WINDFALL 170Y	ADJ WW
SYES CURTAIN CALL 466C	WULFS XCLUSIVE 2458X	747
COLE MISS CURTAIN CALL 916G	MISS SYES FRIENDLY 465Z	
COLE MISS BIG WIND 668D	AHCC BIG WIND B904	ADJ YW
	COLE MISS THUNDER 3112A	1294

	CD	BW	WW	YW	MK	CM	SC	DC	YG	CW	RE	MB	\$MI
EPDs	12	1	77	131	25	7	1.5	13	-.29	46	.94	.03	57
% RANK	35	55	20	10	20	35	3	50	60	10	45	50	40

UFAT: 0.40 • UREA: 15.46 • UIMF: 4.24

Stout-made, wide-topped, and rugged designed is this son of COLE Halfback 08H who gives you a great look. His dam is a maternal, hard-working SYES Curtain Call 466C daughter. On paper, COLE Halfback 32K has good growth paired with well-balanced carcass traits. If you are searching for a bull that will improve growth and carcass merit look no further than this guy.



#23

23 COLE ENVISION 33K

PERCENTAGE(81/71.6) • HOMO POLLED (T) • HOMO BLACK (P-2)
2/8/2022 • COLE 33K • NXM2509485

AHCC BARN BURNER B907	AHCC WESTWIND W544	ACT BW
CELL ENVISION 7023E	LVLS 9066U	86
PBRS ZSA ZSA 246Z	TW FIRE N' ICE	
	PBRS ULL 854U	ADJ WW
SYES CURTAIN CALL 466C	WULFS XCLUSIVE 2458X	717
COLE MISS CURTAIN CALL 833F	MISS SYES FRIENDLY 465Z	
COLE MISS CONSENSUS 510C	CONNELLY CONSENSUS 7229	ADJ YW
	HC PASSION 370	1264

	CD	BW	WW	YW	MK	CM	SC	DC	YG	CW	RE	MB	\$MI
EPDs	12	1	76	123	19	6	1.7	15	-.39	35	1.05	.14	61
% RANK	35	55	25	15	70	55	1	25	40	35	35	35	25

UFAT: 0.31 • UREA: 14.28 • UIMF: 3.52

Be sure not to overlook this wide-bodied, fast-growing, thick-ended individual. He posted a 205-day-weight of 717. His sire, CELL Envision 7023E has proven to transmit progeny that pair big data with stand-out phenotypes. This herd sire comes with a well-balanced EPD profile, paired with a great look. Don't miss out, add this homozygous polled, homozygous black sire to your arsenal.

24

COLE FORTUNE 36K

PUREBRED(90/80.1) • HET POLLED (T) • HOMO BLACK (T)
2/8/2022 • COLE 36K • NPM2509486

COLE CADILLAC 05C
COLE FORTUNE 12F
COLE MISS AUSTIN 3157A

EXLR REBOUND 704R
COLE MISS REBOUND 0129X
COLE 6122S

ROMN TUFF ENUFF 103T
COLE MISS XRATED 354A
AHCC XPENSE ACCOUNT X516
COLE MISS TRAVELER 015X
MAGS JUMANJI
EXLR SAMANTHA 408K
TNUH BLUE PRINT 245H
COLE 4127P

ACT BW
88

ADJ WW
744

ADJ YW
1138

	CD	BW	WW	YW	MK	CM	SC	DC	YG	CW	RE	MB	\$MI
EPDs	13	-.2	74	110	25	6	.3	9	-.32	26	.93	.04	56
% RANK	30	25	25	25	20	50	85	85	>95	50	85	10	10

UFAT: 0.28 • UREA: 15.78 • UIMF: 3.31

If you like long-bodied, heavily muscled, functionally correct cattle that are homozygous black, then watch for this exceptional son of COLE Fortune 36K. His dam is an experienced older female that exhibits the longevity this breed is famous for. On paper, he has a low birth weight figure and exceptional maternal figures without sacrificing growth and performance. These traits indicate his ability to sire a fantastic set of replacements. Bid with confidence.



COLE FORTUNE 12F • Sire of Lot 24

25

COLE EARNING POWER 35K ET

PERCENTAGE(84/72.6) • HOMO POLLED (P-1) • HOMO BLACK (P-1)
2/8/2022 • COLE 35K • NXM2508736

MAGS ANCHOR
AHCC EARNING POWER 900E ET
LVLS 9066U

COLE ZONE 89Z
COLE MISS ZONE 5110C
COLE MISS WINDFALL 257Z

LH WAR HERO 195W
MGS XIPHOPAGOUS
LVLS FARMER JOHN 7428P
LVLS9066R
DHVO DEUCE 132R
COLE 02L
COLE WINDFALL 144W
COLE MISS FIRST DOWN 684SE-EPDs

ACT BW
84

ADJ WW
671

ADJ YW
1212

	CD	BW	WW	YW	MK	CM	SC	DC	YG	CW	RE	MB	\$MI
EPDs	11	0	76	127	24	7	1.5	14	-.21	54	.87	.26	64
% RANK	50	30	25	10	25	35	3	40	70	3	55	20	15

UFAT: 0.35 • UREA: 14.78 • UIMF: 3.98

A heavyweight, homozygous polled, homozygous black percentage bull that grabs your attention due to his length of body, wide top, hind quarter dimension and performance. He is sired by the popular AHCC Earning Power 900E. On paper COLE Earning Power 35K has exceptional growth. Don't miss this herd sire prospect that will add pounds and dollars to any operation.



25

26

COLE EARNING POWER 102K

PERCENTAGE(84/72.6) • HOMO POLLED (P-1) • HOMO BLACK (P-1)
3/3/2022 • COLE 102K • NXM2509578

MAGS ANCHOR
AHCC EARNING POWER 900E ET
LVLS 9066U

COLE ZONE 89Z
COLE MISS ZONE 5110C
COLE MISS WINDFALL 257Z

LH WAR HERO 195W
MGS XIPHOPAGOUS
LVLS FARMER JOHN 7428P
LVLS9066R
DHVO DEUCE 132R
COLE 02L
COLE WINDFALL 144W
COLE MISS FIRST DOWN 684S

ACT BW
88

ADJ WW
721

ADJ YW
1302

	CD	BW	WW	YW	MK	CM	SC	DC	YG	CW	RE	MB	\$MI
EPDs	10	1.5	77	126	24	7	1.5	12	-.24	53	.92	.17	62
% RANK	60	65	20	15	25	35	3	65	65	4	45	30	25

UFAT: 0.33 • UREA: 15.14 • UIMF: 2.90

If you like performance-oriented, sound-structured, big-bodied, homozygous black, homozygous polled cattle that have a combination of function and numbers, then study this amazing herd sire.



26



27 COLE EARNING POWER 62K ET

PERCENTAGE(84/72.6) • HOMO POLLED (P-1) • HOMO BLACK (P-1)
2/16/2022 • COLE 62K • NXM2508737

MAGS ANCHOR
AHCC EARNING POWER 900E ET
LVLS 9066U

COLE ZONE 89Z
COLE MISS ZONE 5110C
COLE MISS WINDFALL 257Z

LH WAR HERO 195W
MGS XIPHOPAGOUS
LVLS FARMER JOHN 7428P
LVLS9066R
DHVO DEUCE 132R
COLE 02L
COLE WINDFALL 144W
COLE MISS FIRST DOWN 68

ACT BW
98
ADJ WW
768
ADJ YW
1394

	CD	BW	WW	YW	MK	CM	SC	DC	YG	CW	RE	MB	\$MI
EPDs	10	3.1	85	137	24	7	1.5	13	-.18	56	.79	.12	62
% RANK	60	90	5	4	25	35	3	50	75	2	60	40	25

UFAT: 0.38 • UREA: 15.64 • UIMF: 4.22

The total package. This bull is heavily muscled, double homozygous and sired by the popular AHCC Earning Power 900E. Lot 27 ranks in the top 5% of the breed for weaning weight and yearling weight.



28 COLE EARNING POWER 77K

PUREBRED(90/78) • HOMO POLLED (P-1) • HOMO BLACK (P-1)
2/21/2022 • COLE 77K • NPM2509509

MAGS ANCHOR
AHCC EARNING POWER 900E ET
LVLS 9066U

COLE TOOLBOX 89T
COLE MISS TOOLBOX 962W
COLE 09F

LH WAR HERO 195W
MGS XIPHOPAGOUS
LVLS FARMER JOHN 7428P
LVLS9066R
CARROUSELS PURE POWER
COLE 19N
COLE BLACK POLL DIVIDEND
COLE 409D

ACT BW
98
ADJ WW
833
ADJ YW
1380

	CD	BW	WW	YW	MK	CM	SC	DC	YG	CW	RE	MB	\$MI
EPDs	5	4.2	82	131	26	4	1.3	13	-.48	47	1.36	.02	60
% RANK	>95	>95	5	3	15	85	4	60	60	3	10	10	5

UFAT: 0.25 • UREA: 16.74 • UIMF: 3.29

Here's one that comes to us in an extra heavy-muscled package and carries that traditional Limousin look that made the breed popular. Visually, this own son of AHCC Earning Power 900E is thick-ended, wide-topped and structurally correct.

COLE MISS ZONE 5110C • Dam of Lots 25-27

WATCH & BID ONLINE

DVAuction
Broadcasting Real-Time Auctions

www.DVAuction.com

For General Questions, Contact Our Office:
(402) 316-5460 or support@dvauction.com

29 COLE ENVISION 64K

PERCENTAGE(80/69.4) • HOMO POLLED (P-1) • HOMO BLACK (P-1)
2/16/2022 • COLE 64K • NXM2509501

AHCC BARN BURNER B907
CELL ENVISION 7023E
PBRS ZSA ZSA 246Z

MAGS AVIATOR
CELL 7059E
LVLS ZABEL 9078Z

AHCC WESTWIND W544
LVLS 9066U
TW FIRE N' ICE
PBRS ULL 854U
MAGS WINSTON
MAGS XTRA REST
LVLS TOP CRITERIA 8862P
LVLS MISS JOHN 9078X

ACT BW
84
ADJ WW
663
ADJ YW
1202

	CD	BW	WW	YW	MK	CM	SC	DC	YG	CW	RE	MB	\$MI
EPDs	11	0	75	121	22	7	1.3	20	-.26	47	1.09	.18	62
% RANK	50	30	25	20	40	35	15	1	60	10	30	30	25

UFAT: 0.37 • UREA: 14.64 • UIMF: 4.12

Here is another son of the extremely popular AI sire, CELL Envision 7023E. This sire constantly transmits high-growth, eye-catching progeny that have breed-leading growth and acceptance. Make no mistake and be sure to have this outstanding individual on your short list April 4!

30

COLE ENVISION 79K

PERCENTAGE(81/71.3) • HOMO POLLED (P-1) • HOMO BLACK (P-1)
2/21/2022 • COLE 79K • NXM2509511

AHCC BARN BURNER B907
CELL ENVISION 7023E
PBRS ZSA ZSA 246Z

AHCC WESTWIND W544
LVLS 9066U
TW FIRE N' ICE
PBRS ULL 854U
HC OVERTIME 756
HC DYNASTY 215
COLEMAN PRODUCTION 608
COLE 406P

ACT BW
90
ADJ WW
722
ADJ YW
1233

HC OVERTIME 972
COLE MISS OVERTIME 197Y
COLE MISS PRODUCTION 878U

	CD	BW	WW	YW	MK	CM	SC	DC	YG	CW	RE	MB	\$MI
EPDs	10	1.5	80	126	21	5	1.6	19	-39	44	1.24	.03	59
% RANK	60	65	15	15	50	70	3	2	40	15	15	50	35

UFAT: 0.26 • UREA: 17.34 • UIMF: 1.88

Lot 30 ranks in the top 15% of the breed or better for 7 industry-relevant EPD traits. Turn this guy out with your cowherd and have an exceptional group of calves to sell and an even better set of replacement females.



CELL ENVISION 7023E • Sire of Lot 30

31

COLE HOMERUN 80K

PERCENTAGE(84/73.3) • HOMO POLLED (P-1) • HOMO BLACK (T)
2/22/2022 • COLE 80K • NXM2509519

CELL ENVISION 7023E
COLE HOMERUN 51H ET
COLE MISS XRATED 354A

AHCC BARN BURNER B907
PBRS ZSA ZSA 246Z
MRL X-RATED 014X
COLE MISS PRODUCTION 874U
WULFS RANSOM 3059R
ROMN ROBERTA 35R
RUNL STETSON 850S
COLE MISS PRODUCTION 9186

ACT BW
90
ADJ WW
725
ADJ YW
1171

ROMN TUFF ENUFF 103T
COLE MISS TUFF ENUFF 308A
COLE MISS STETSON 114Y

	CD	BW	WW	YW	MK	CM	SC	DC	YG	CW	RE	MB	\$MI
EPDs	12	-.1	80	118	19	8	1.1	14	-35	42	1.17	-.06	55
% RANK	35	30	15	20	70	20	20	40	50	20	20	65	50

UFAT: 0.27 • UREA: 16.36 • UIMF: 2.53

Study this son of the \$40,000 COLE Homerun 51H, the top-selling bull in our 2021 Bull Sale. Homerun is now covering the pastures at Linhart Limousin in Iowa. Study this lot to find exceptional growth and one heck of a proven pedigree.



Lot 31

32

COLE HOMERUN 95K

LIM-FLEX(75/65.6) • HOMO POLLED (P-3) • HOMO BLACK (P-2)
2/28/2022 • COLE 95K • LFM2509520

CELL ENVISION 7023E
COLE HOMERUN 51H ET
COLE MISS XRATED 354A

AHCC BARN BURNER B907
PBRS ZSA ZSA 246Z
MRL X-RATED 014X
COLE MISS PRODUCTION 874U
MAGS WINSTON
MAGS XANTHOUS
COLE 132T
COLE MISS PRODUCTION 9159

ACT BW
90
ADJ WW
709
ADJ YW
1227

MAGS ZODIAC
COLE MISS ZODIAC 6108D
COLE2129Z

	CD	BW	WW	YW	MK	CM	SC	DC	YG	CW	RE	MB	\$MI
EPDs	11	2.4	80	121	19	5	1.1	14	-26	44	.86	.08	59
% RANK	50	85	20	30	70	75	30	35	30	25	30	75	55

UFAT: 0.36 • UREA: 14.78 • UIMF: 3.53

This herd sire prospect is an absolute eye-catcher. Stout featured, long-bodied and wide-based. His sire, COLE Homerun 51H, was raised and sold by us in 2021. His progeny have extra eye appeal. This homozygous polled, homozygous black Lim-Flex is going to do big things for the winning bidder. Make that be you.



Lot 32



COLE HOMERUN 51H ET • Sire of Lot 33

33 **COLE HOMERUN 100K**
 PUREBRED(90/79) • HET POLLED (T) • BLACK
 3/2/2022 • COLE 100K • NPM2509598

CELL ENVISION 7023E	AHCC BARN BURNER B907	ACT BW
COLE HOMERUN 51H ET	PBR5 ZSA ZSA 246Z	94
COLE MISS XRATED 354A	MRL X-RATED 014X	ADJ WW
	COLE MISS PRODUCTION 874U	720
COLE ZONE 89Z	DHVO DEUCE 132R	ADJ YW
COLE MISS ZONE 719E	COLE 02L	1244
COLE MISS FIRST DOWN 623S	COLE FIRST DOWN 46D	
	COLE 37F	

	CD	BW	WW	YW	MK	CM	SC	DC	YG	CW	RE	MB	\$MI
EPDs	9	2.1	75	117	22	5	1.3	9	-.34	44	.99	-.03	55
% RANK	70	70	25	10	45	70	4	85	95	4	75	20	20

UFAT: 0.23 • UREA: 12.82 • UIMF: 3.44
 If you like purebred bulls that are heavily muscled, high growth and loaded with marbling, study this own son of COLE Homerun 51H and consider your search over! We think a lot of this performance-oriented, stout-featured, attractive patterned bull and encourage you to study him.



#34

34 **COLE EASY RIDER 06K**
 LIM-FLEX(65/57.9) • HOMO POLLED (P-2) • HET BLACK (T)
 1/15/2022 • COLE 06K • LFM2508846

ELMW ALFALFA 103B	TMCK ALFALFA 35X	ACT BW
AHCC EASY RIDER 5594E	ELMW WAIT-A-BIT 4W	78
AHCC MISS Y AXIS C5594 ET	MAGS Y-AXIS	ADJ WW
	AHCC DAKOTA LUVLY R595	787
COLE ARCHITECT 08A	MRL X-RATED 014X	ADJ YW
COLE MISS ARCHITECT 033H ET	COLE MISS LODESTAR 826U	1300
COLE MISS TRAVELER 029X	COLEMAN TRAVELER 797	
	COLE 91L	

	CD	BW	WW	YW	MK	CM	SC	DC	YG	CW	RE	MB	\$MI
EPDs	10	.6	90	134	22	7	.9	12	-.22	34	.97	.16	65
% RANK	65	45	4	10	35	35	50	65	40	55	15	55	30

UFAT: 0.66 • UREA: 14.00 • UIMF: 3.50
 COLE 06K combines a fresh pedigree with a fantastic phenotype guaranteed to catch our eye. His sire, AHCC Easy Rider 5594E is an AI sire gaining in popularity. On paper, 06K has a 90 weaning weight EPD and a 134 yearling weight EPD—both ranking in the top 10% of the breed. His dam is a young daughter of COLE Architect 08A who is quickly sorting her way to the top.



AHCC EASY RIDER 5594E • Sire of Lots 34-37

35 **COLE EASY RIDER 05K**
 LIM-FLEX(54/48.4) • HOMO POLLED (P-1) • HOMO BLACK (P-1)
 1/14/2022 • COLE 05K • LFM2508845

ELMW ALFALFA 103B	TMCK ALFALFA 35X	ACT BW
AHCC EASY RIDER 5594E	ELMW WAIT-A-BIT 4W	82
AHCC MISS Y AXIS C5594 ET	MAGS Y-AXIS	ADJ WW
	AHCC DAKOTA LUVLY R595	732
MAGS FIRESTONE 218F	MAGS APPLE JACK	ADJ YW
COLE MISS FIRESTONE 077H	MAGS DAYSTAR	1215
COLE MISS PRODUCTION 522C ET	COLEMAN PRODUCTION 608	
	COLE 141L	

	CD	BW	WW	YW	MK	CM	SC	DC	YG	CW	RE	MB	\$MI
EPDs	12	1.2	82	127	22	8	.6	11	-.17	38	.76	.28	66
% RANK	35	60	15	20	35	20	80	80	55	40	40	30	20

UFAT: 0.34 • UREA: 12.58 • UIMF: 3.76
 It won't be hard to find COLE Easy Rider 05K in his pen. He combines impressive eye appeal with a desirable pedigree, a balanced EPD profile with high growth, milk, marbling and mainstream terminal index. To top it off, this double homozygous Lim-Flex also posted very respectable actual performance and ultrasound figures.

36

COLE EASY RIDER 12K

LIM-FLEX(60/53.1) • HOMO POLLED (P-2) • HOMO BLACK (P-2)
1/21/2022 • COLE 12K • LFM2508851

ELMW ALFALFA 103B
AHCC EASY RIDER 5594E
AHCC MISS Y AXIS C5594 ET

TMCK ALFALFA 35X
ELMW WAIT-A-BIT 4W
MAGS Y-AXIS
AHCC DAKOTA LUVLY R595

ACT BW
86

ADJ WW
759

CJSL CREED 5042C
COLE MISS CREED 087H
COLE279Z

MAGS AVIATOR
CJSL 2090Z
COLE 132T
COLE MISS PRODUCTION 936W

ADJ YW
1252

	CD	BW	WW	YW	MK	CM	SC	DC	YG	CW	RE	MB	\$MI
EPDs	9	2.2	81	130	21	6	.4	12	-.06	36	.68	.48	73
% RANK	80	85	20	15	45	55	95	65	85	45	55	10	5

UFAT: 0.73 • UREA: 14.72 • UIMF: 3.96

If your goal is to up the ante in terms of improving growth and marbling without sacrificing eye appeal or convenience traits, then COLE Easy Rider 12K should be on your short list come sale day.



37

COLE EASY RIDER 44K

LIM-FLEX(65/57.2) • HOMO POLLED (P-2) • HET BLACK (T)
2/11/2022 • COLE 44K • LFM2509492

ELMW ALFALFA 103B
AHCC EASY RIDER 5594E
AHCC MISS Y AXIS C5594 ET

TMCK ALFALFA 35X
ELMW WAIT-A-BIT 4W
MAGS Y-AXIS
AHCC DAKOTA LUVLY R595

ACT BW
98

ADJ WW
854

COLE ARCHITECT 08A
COLE MISS ARCHITECT 825F
COLE MISS THUNDER 3112A

MRL X-RATED 014X
COLE MISS LODESTAR 826U
CONNEALY THUNDER
CARROUSELS LAUREL 1100L

ADJ YW
1431

	CD	BW	WW	YW	MK	CM	SC	DC	YG	CW	RE	MB	\$MI
EPDs	10	1.6	95	141	22	7	1.3	13	-.22	35	.98	.09	64
% RANK	65	70	2	5	35	35	20	50	40	50	15	70	30

UFAT: 0.58 • UREA: 15.24 • UIMF: 4.29

Another Easy Rider son who is easy on the eyes, while posting some of the most impressive weaning and yearling weight EPDs in the offering.



38

COLE FORTUNE 15K

LIM-FLEX(73/63.3) • HOMO POLLED (P-2) • HOMO BLACK (T)
1/23/2022 • COLE 15K • LFM2508853

COLE CADILLAC 05C
COLE FORTUNE 12F
COLE MISS AUSTIN 3157A

ROMN TUFF ENUFF 103T
COLE MISS XRATED 354A
AHCC XPENSE ACCOUNT X516
COLE MISS TRAVELER 015X

ACT BW
80

ADJ WW
692

AHCC EARNING POWER 900E ET
COLE MISS EARNING POWER 085H
COLE MISS PRODUCT 3118A

MAGS ANCHOR
LVLS 9066U
COLEMAN PRODUCTION 608
COLE 4108P

ADJ YW
1111

	CD	BW	WW	YW	MK	CM	SC	DC	YG	CW	RE	MB	\$MI
EPDs	15	-1	69	110	20	9	.5	14	-.17	30	.82	.28	63
% RANK	10	15	60	55	60	10	85	35	55	70	35	30	40

UFAT: 0.28 • UREA: 14.06 • UIMF: 2.25

Here is a calving-ease specialist who also combines top percentile rankings for both ribeye area and marbling.

39

COLE FORTUNE 10K

LIM-FLEX(71/63.3) • HOMO POLLED (P-1) • HOMO BLACK (T)
1/20/2022 • COLE 10K • LFM2508850

COLE CADILLAC 05C
COLE FORTUNE 12F
COLE MISS AUSTIN 3157A

ROMN TUFF ENUFF 103T
COLE MISS XRATED 354A
AHCC XPENSE ACCOUNT X516
COLE MISS TRAVELER 015X

ACT BW
64

ADJ WW
683

COLE BACKSTAGE 04E
COLE MISS BACKSTAGE 0110H
COLE MISS THUNDER 392A

SYES BACKSTAGE 466B
COLE MISS REGIS 540C
CONNEALY THUNDER
COLE MISS FIRST DOWN 684S

ADJ YW
1162

	CD	BW	WW	YW	MK	CM	SC	DC	YG	CW	RE	MB	\$MI
EPDs	16	-3.8	59	90	20	9	.4	10	-.16	19	.64	.07	52
% RANK	4	1	95	90	60	10	95	85	55	95	60	75	90

UFAT: 0.32 • UREA: 14.30 • UIMF: 1.52

Another calving-ease standout sired by COLE Fortune 12F. Sleep easy knowing this 71%, double homozygous Lim-Flex bull is on the job.

40

COLE FORTUNE 07K

PERCENTAGE(85/74.7) • HOMO POLLED (P-1) • HOMO BLACK (T)
1/18/2022 • COLE 07K • NXM2508847

COLE CADILLAC 05C
COLE FORTUNE 12F
COLE MISS AUSTIN 3157A

AHCC EARNING POWER 900E ET
COLE MISS EARNING POWER 074H
COLE MISS ZONE 489B

ROMN TUFF ENUFF 103T
COLE MISS XRATED 354A
AHCC XPENSE ACCOUNT X516
COLE MISS TRAVELER 015X

MAGS ANCHOR
LVLS 9066U
COLE ZONE 89Z
COLE 1102L

	CD	BW	WW	YW	MK	CM	SC	DC	YG	CW	RE	MB	\$MI
EPDs	17	-3.3	68	114	20	10	.6	11	-.16	36	.78	.11	56
% RANK	3	2	55	30	60	4	70	75	75	35	65	40	45

UFAT: 0.16 • UREA: 13.56 • UIMF: 2.75

The third COLE Fortune 12F son in row who promises to keep birth weights low while still having the ability to sire calves who won't give up any pounds at weaning.



TMCK CASH FLOW 247C • Sire of Lots 41 & 42



41

COLE CASHFLOW 58K

LIM-FLEX(65/58) • HOMO POLLED (T) • HOMO BLACK (T)
2/15/2022 • COLE 58K • LFM2509497

MAGS ALI
TMCK CASH FLOW 247C
TMCK NINA 17X

COLE ZONE 89Z
COLE MISS ZONE 858F
COLE MISS XRATED 361A

CONNEALY CONSENSUS 7229
MAGS YOKO
S A V PIONEER 7301
DVFC NINA 239U
DHVO DEUCE 132R
COLE 02L
MRL X-RATED 014X
COLE MISS PRODUCTION 845U

	CD	BW	WW	YW	MK	CM	SC	DC	YG	CW	RE	MB	\$MI
EPDs	9	2.3	95	148	24	6	1.1	14	-.08	59	.98	-.06	57
% RANK	80	85	2	2	20	55	35	35	80	3	15	95	65

Take a look at this Cash Flow son who posts single digit percentile rankings for WW, YW and CW. Plus he sports a big ribeye EPD.

42

COLE CASHFLOW 101K

LIM-FLEX(46/41.4) • HOMO POLLED (P-2) • HOMO BLACK (P-1)
3/2/2022 • COLE 101K • LFM2509577

MAGS ALI
TMCK CASH FLOW 247C
TMCK NINA 17X

COLEMAN PRODUCTION 608
COLE MISS PRODUCT 3142A
COLE 4129P

CONNEALY CONSENSUS 7229
MAGS YOKO
S A V PIONEER 7301
DVFC NINA 239U
GAR PRECISION 1680
COLEMAN BLACKCAP 211
LVLS 842L
COLE 8117H

	CD	BW	WW	YW	MK	CM	SC	DC	YG	CW	RE	MB	\$MI
EPDs	11	2.2	92	143	22	7	1.1	17	.07	59	.62	.43	73
% RANK	50	85	2	4	35	35	35	10	>95	3	65	10	4

UFAT: 0.41 • UREA: 16.12 • UIMF: 3.50

Another high growth, double homozygous son of TMCK Cash Flow. His sons should grow and produce high quality carcasses, while his daughters should sort themselves to the top of the keeper pen.

43

COLE HARDCORE 130K

PERCENTAGE(78/68.6) • HOMO POLLED (P-1) • BLACK
3/18/2022 • COLE 130K • NXM2509590

TOMV DIESEL 619D
TREF HARDCORE 204H
TREF DELANEY 204D

MAGS Y-AXIS
COLE MISS Y-AXIS 743E
COLE MISS ZAP 5132C

GV AUSTIN 701A
MISS TOM 118Y
JYF YIELDMASTER 80Y
TREF TREASURE 304T
TC ABERDEEN 759
MAGS UAHUKA
COLE ZAP 82Z
COLE MISS WINDFALL 126Y

	CD	BW	WW	YW	MK	CM	SC	DC	YG	CW	RE	MB	\$MI
EPDs	10	2.7	90	145	29	6	.4	17	-.48	50	1.35	-.16	56
% RANK	60	90	2	2	4	55	80	10	25	10	4	85	50

UFAT: 0.34 • UREA: 17.94 • UIMF: 2.58

This herd sire prospect brings pounds and muscle. Here is a big, stout, wide-made, rugged purebred that comes to us in a heavyweight package. He is sired by TREF Hardcore 204H, the TOMV Diesel 619D son that sold for \$50,000 at the 2021 Treftz Bull Sale. Study the numbers of COLE Hardcore 130K and find exceptional growth and maternal traits, plus a top 5% ranking for ribeye. Bid with confidence.

44

COLE HARDCORE 127K

PUREBRED(100/88.5) • HOMO POLLED (P-1) • BLACK
3/11/2022 • COLE 127K • NPM2509589

TOMV DIESEL 619D
TREF HARDCORE 204H
TREF DELANEY 204D

AHCC XPENSE ACCOUNT X516
COLE BEAUTY 850F ET
COLE BEAUTY 276Z

GV AUSTIN 701A
MISS TOM 118Y
YJF YIELDMASTER 80Y
TREF TREASURE 304T
KAJO RESPONDER 120R
AHCC MISS NORHTSTAR R516
COLE 132T
COLE MISS KATY MAY 9105W

	CD	BW	WW	YW	MK	CM	SC	DC	YG	CW	RE	MB	\$MI
EPDs	7	3.6	81	133	23	4	.3	14	-.5	44	1.32	-.08	56
% RANK	90	95	10	2	35	85	80	50	55	4	15	30	15

UFAT: 0.19 • UREA: 14.40 • UIMF: 1.76

45

COLE ENCORE 17K

PUREBRED(89/78) • HOMO POLLED (P-3) • HET BLACK (T)
1/25/2022 • COLE 17K • NPM2508854

LFLC CHECKING ACCOUNT 701C
SYES ENCORE 315E
MISS SYES ROSCOE 316X

AHCC EASY RIDER 5594E
COLE MISS EASY RIDER 003H
COLE MISS CADILLAC 830F

WULF'S ZIPLOCK N922Z
LFLC 701X XTRA GOOD
PLND ROSCOE 051R
MISS SYES LINEBACKER 317S
ELMW ALFALFA 103B
AHCC MISS Y AXIS C5594 ET
COLE CADILLAC 05C
COLE MISS YOKEL 464B

	CD	BW	WW	YW	MK	CM	SC	DC	YG	CW	RE	MB	\$MI
EPDs	14	-.7	70	107	19	8	.5	15	-.55	32	1.27	-.15	50
% RANK	25	20	40	30	75	20	70	25	35	35	20	50	45

UFAT: 0.20 • UREA: 16.50 • UIMF: 3.23

46

COLE ENCORE 08K

PUREBRED(90/80.6) • HOMO POLLED (P-3) • HET BLACK (T)
1/19/2022 • COLE 08K • NPM2508848

LFLC CHECKING ACCOUNT 701C
SYES ENCORE 315E
MISS SYES ROSCOE 316X

COLE CADILLAC 05C
COLE MISS CADILLAC 071H ET
COLE MISS ZAM 6112D

WULF'S ZIPLOCK N922Z
LFLC 701X XTRA GOOD
PLND ROSCOE 051R
MISS SYES LINEBACKER 317S
ROMN TUFF ENUFF 103T
COLE MISS XRATED 354A
COLE ZAM 62Z
COLE MISS PRODUCT 3118A

	CD	BW	WW	YW	MK	CM	SC	DC	YG	CW	RE	MB	\$MI
EPDs	17	-2.9	65	96	19	9	.3	14	-.49	33	1.28	-.05	52
% RANK	10	2	60	55	75	10	80	50	60	30	20	20	35

UFAT: 0.24 • UREA: 16.88 • UIMF: 1.93

47

COLE ENCORE 37K

LIM-FLEX(75/67.2) • HOMO POLLED (P-2) • HOMO BLACK (P-2)
2/8/2022 • COLE 37K • LFM2509487

LFLC CHECKING ACCOUNT 701C
SYES ENCORE 315E
MISS SYES ROSCOE 316X

MAGS Y-AXIS
COLE MISS Y-AXIS 801F
CJSL 6079D

WULF'S ZIPLOCK N922Z
LFLC 701X XTRA GOOD
PLND ROSCOE 051R
MISS SYES LINEBACKER 317S
TC ABERDEEN 759
MAGS UAHUKA
MAGS XUKALANI
MAGS XPRESS LINE

	CD	BW	WW	YW	MK	CM	SC	DC	YG	CW	RE	MB	\$MI
EPDs	11	.7	83	125	22	6	1	14	-.47	36	1.16	-.12	55
% RANK	50	45	15	20	35	55	35	35	3	45	5	>95	80

UFAT: 0.23 • UREA: 16.68 • UIMF: 2.32

48

COLE ENCORE 38K

PUREBRED(100/89.7) • HET POLLED (T) • HOMO BLACK (P-2)
2/8/2022 • COLE 38K • NPM2509488

LFLC CHECKING ACCOUNT 701C
SYES ENCORE 315E
MISS SYES ROSCOE 316X

AHCC XPENSE ACCOUNT X516
COLE BEAUTY 643D ET
COLE BEAUTY 276Z

WULF'S ZIPLOCK N922Z
LFLC 701X XTRA GOOD
PLND ROSCOE 051R
MISS SYES LINEBACKER 317S
KAJO RESPONDER 120R
AHCC MISS NORHTSTAR R516
COLE 132T
COLE MISS KATY MAY 9105W

	CD	BW	WW	YW	MK	CM	SC	DC	YG	CW	RE	MB	\$MI
EPDs	14	.4	67	109	20	6	.8	14	-.58	23	1.2	-.03	54
% RANK	25	35	50	25	65	50	30	50	25	60	35	20	20

UFAT: 0.18 • UREA: 16.58 • UIMF: 2.21

49

COLE EARNING POWER 60K

PERCENTAGE(84/72.7) • HOMO POLLED (P-1) • HOMO BLACK (T)
2/15/2022 • COLE 60K • NXM2509498

MAGS ANCHOR
AHCC EARNING POWER 900E ET
LVLS9066U

AHCC XPENSE ACCOUNT X516
COLE MISS AUSTIN 7113E
COLE286Z

LH WAR HERO 195W
MGS XIPHOPAGOUS
LVLS FARMER JOHN 7428P
LVLS9066R
KAJO RESPONDER 120R
AHCC MISS NORHTSTAR R516
COLE 132T
COLE MISS PRODUCTION 9171

	CD	BW	WW	YW	MK	CM	SC	DC	YG	CW	RE	MB	\$MI
EPDs	9	2.9	76	130	17	4	1.5	17	-.32	44	1.04	.3	67
% RANK	75	90	25	10	85	85	5	10	55	15	35	15	10

UFAT: 0.26 • UREA: 16.92 • UIMF: 2.38



"We have used Coleman Limousin bulls for nearly two decades on our black, white-faced cows. We value the consistency and depth of the Coleman bull offering along with the balance, performance and efficiency of their offspring. Our bred yearling heifers are highly sought after and our repeat feedlot customers have told us "not to change a thing". Good bulls from really good people."

*Ken Spann and Jan Spann Washburn
Spann Ranches, Inc., Gunnison, CO*

50 COLE EARNING POWER 78K

LIM-FLEX(65/55.7) • HOMO POLLED (P-1) • HOMO BLACK (P-1)
2/21/2022 • COLE 78K • LFM2509510

MAGS ANCHOR
AHCC EARNING POWER 900E ET
LVLS 9066U

LH WAR HERO 195W
MGS XIPHOPAGOUS
LVLS FARMER JOHN 7428P
LVLS9066R

ACT BW
96

CONNEALY CONSENSUS 7229
COLE MISS CONSENSUS 524C
COLE MISS FIRSTDOWN 9115W

CONNEALY CONSENSUS
BLUE LILLY OF CONANGA 16
COLE FIRST DOWN 46D
COLE 98R

ADJ WW
734

ADJ YW
1306

	CD	BW	WW	YW	MK	CM	SC	DC	YG	CW	RE	MB	\$MI
EPDs	10	1.9	75	118	17	7	1.7	16	-19	40	.71	.35	67
% RANK	65	75	35	35	85	35	2	15	50	35	50	20	20

UFAT: 0.37 • UREA: 13.94 • UIMF: 4.02

51 COLE EARNING POWER 26K

LIM-FLEX(65/56.2) • HOMO POLLED (T) • HOMO BLACK (T)
2/3/2022 • COLE 26K • LFM2509482

MAGS ANCHOR
AHCC EARNING POWER 900E ET
LVLS 9066U

LH WAR HERO 195W
MGS XIPHOPAGOUS
LVLS FARMER JOHN 7428P
LVLS9066R

ACT BW
84

KESSLERS FRONTMAN R001
COLE MISS FRONTMAN 5116C
COLE MISS REBOUND 0129X

CONNEALY FRONT PAGE 0228
KESSLERS BELL 0024
EXLR REBOUND 704R
COLE 6122S

ADJ WW
653

ADJ YW
1120

	CD	BW	WW	YW	MK	CM	SC	DC	YG	CW	RE	MB	\$MI
EPDs	12	.2	71	111	21	8	1.7	13	-15	39	.66	.37	66
% RANK	35	35	50	50	45	20	3	50	60	35	55	20	20

UFAT: 0.44 • UREA: 12.58 • UIMF: 4.97

52 COLE GENESIS 61K

PUREBRED(87/77.4) • HOMO POLLED (T) • HET BLACK (T)
2/15/2022 • COLE 61K • NPM2509499

HUNT CREDENTIALS 37C ET
COLE GENESIS 86G
COLE MISS XRATED 354A

HUNT TESTAMENT 40T
JKTW WHISKEY RIVER 985 W
MRL X-RATED 014X

ACT BW
80

AHCC XPENSE ACCOUNT X516
COLE MISS AUSTIN 666D
COLE277Z

COLE MISS PRODUCTION 874U
KAJO RESPONDER 120R
AHCC MISS NORHTSTAR R516
COLE 132T
COLE MISS PRODUCTION 915W

ADJ WW
666

ADJ YW
1230

	CD	BW	WW	YW	MK	CM	SC	DC	YG	CW	RE	MB	\$MI
EPDs	13	-.1	70	108	23	6	.5	15	-24	40	.84	.37	67
% RANK	30	30	40	30	35	50	55	25	>95	10	95	1	1

UFAT: 0.39 • UREA: 14.92 • UIMF: 4.24

53 COLE GENESIS 63K

PUREBRED(93/82.7) • HOMO POLLED (P-2) • HOMO BLACK (T)
2/16/2022 • COLE 63K • NPM2509500

HUNT CREDENTIALS 37C ET
COLE GENESIS 86G
COLE MISS XRATED 354A

HUNT TESTAMENT 40T
JKTW WHISKEY RIVER 985 W
MRL X-RATED 014X

ACT BW
76

COLE ZONE 89Z
COLE MISS ZONE 4100B
COLE MISS FIRSTDOWN 6144S

COLE MISS PRODUCTION 874U
DHVO DEUCE 132R
COLE 02L
COLE FIRST DOWN 46D
COLE 58L

ADJ WW
697

ADJ YW
1072

	CD	BW	WW	YW	MK	CM	SC	DC	YG	CW	RE	MB	\$MI
EPDs	16	-1.1	70	105	29	9	.5	12	-37	39	1.05	.12	58
% RANK	10	15	40	35	5	10	70	70	95	15	65	4	10

UFAT: 0.37 • UREA: 16.04 • UIMF: 3.77

54 COLE EASY RIDER 57K

LIM-FLEX(65/57.9) • HOMO POLLED (P-2) • HOMO BLACK (P-1)
2/14/2022 • COLE 57K • LFM2509496

ELMW ALFALFA 103B
AHCC EASY RIDER 5594E
AHCC MISS Y AXIS C5594 ET

TMCK ALFALFA 35X
ELMW WAIT-A-BIT 4W
MAGS Y-AXIS

ACT BW
92

COLE ARCHITECT 08A
COLE MISS ARCHITECT 861F ET
COLE MISS TRAVELER 029X

AHCC DAKOTA LUVLY R595
MRL X-RATED 014X
COLE MISS LODESTAR 826U
COLEMAN TRAVELER 797
COLE 91L

ADJ WW
681

ADJ YW
1218

	CD	BW	WW	YW	MK	CM	SC	DC	YG	CW	RE	MB	\$MI
EPDs	8	1.8	87	129	19	4	.9	15	-26	28	.96	.03	59
% RANK	90	75	10	15	70	90	50	25	30	75	20	85	55

UFAT: 0.36 • UREA: 16.50 • UIMF: 3.80

55 COLE HOMERUN 103K

LIM-FLEX(71/62.7) • HOMO POLLED (T) • HOMO BLACK (P-1)
3/3/2022 • COLE 103K • LFM2509599

CELL ENVISION 7023E
COLE HOMERUN 51H ET
COLE MISS XRATED 354A

AHCC BARN BURNER B907
PBRS ZSA ZSA 246Z
MRL X-RATED 014X

ACT BW
98

COLE JUNEAU 60A
COLE MISS JUNEAU 5120C
COLE MISS AUSTIN 3135A

COLE MISS PRODUCTION 874U
COLEMAN JUNEAU 044
COLE MISS PUREPOWER 792T
AHCC XPENSE ACCOUNT X516
COLE MISS PRODUCTION 089X

ADJ WW
706

ADJ YW
1209

	CD	BW	WW	YW	MK	CM	SC	DC	YG	CW	RE	MB	\$MI
EPDs	11	1.1	68	103	25	5	1.4	13	-32	27	.94	.19	60
% RANK	50	55	65	70	15	75	15	50	20	80	20	50	50

UFAT: 0.32 • UREA: 14.44 • UIMF: 4.25

56 COLE HOMERUN 109K

PERCENTAGE(84/74.2) • HOMO POLLED (P-3) • HOMO BLACK (P-2)
3/3/2022 • COLE 109K • NXM2509600

CELL ENVISION 7023E
COLE HOMERUN 51H ET
COLE MISS XRATED 354A

AHCC BARN BURNER B907
PBRS ZSA ZSA 246Z
MRL X-RATED 014X

ACT BW
96

RUNL STETSON 850S
COLE MISS STETSON 3123A
COLE MISS WINDFALL 1114Y

COLE MISS PRODUCTION 874U
JCL LODESTAR 27L
RUNL 72L
COLE WINDFALL 144W
ANLC KELLY 0769K

ADJ WW
718

ADJ YW
1284

	CD	BW	WW	YW	MK	CM	SC	DC	YG	CW	RE	MB	\$MI
EPDs	10	2.2	78	116	24	6	1.4	13	-42	36	1.13	.13	62
% RANK	60	80	20	25	25	55	10	50	35	35	25	35	25

UFAT: 0.33 • UREA: 14.24 • UIMF: 4.11

57 COLE HOMERUN 114K

PUREBRED(90/79.3) • HOMO POLLED (T) • BLACK
3/6/2022 • COLE 114K • NPM2509601

CELL ENVISION 7023E
COLE HOMERUN 51H ET
COLE MISS XRATED 354A

AHCC BARN BURNER B907
PBRS ZSA ZSA 246Z
MRL X-RATED 014X

ACT BW
86

COLE ZONE 89Z
COLE MISS ZONE 527C
COLE MISS FINALTIME 961W

COLE MISS PRODUCTION 874U
DHVO DEUCE 132R
COLE 02L
HC FINAL TIME 407
COLE 20N

ADJ WW
655

ADJ YW
1209

	CD	BW	WW	YW	MK	CM	SC	DC	YG	CW	RE	MB	\$MI
EPDs	11	1.5	76	116	21	6	1.3	9	-39	39	1.09	.02	57
% RANK	45	60	20	15	55	50	3	85	90	15	60	10	10

UFAT: 0.32 • UREA: 13.90 • UIMF: 4.11

58 COLE HOMERUN 115K

PERCENTAGE(84/73.2) • HOMO POLLED (P-2) • HOMO BLACK (P-3)
3/6/2022 • COLE 115K • NXM2509602

CELL ENVISION 7023E COLE HOMERUN 51H ET COLE MISS XRATED 354A	AHCC BARN BURNER B907 PBR5 ZSA ZSA 246Z MRL X-RATED 014X COLE MISS PRODUCTION 874U AHCC WESTWIND W544 LVLS 9066U AHCC XPENSE ACCOUNT X516 COLE 056X	ACT BW 98 ADJ WW 785 ADJ YW 1416
--	--	---

AHCC BIG WIND B904 COLE MISS BIG WIND 652D COLE MISS AUSTIN 335A		
---	--	--

	CD	BW	WW	YW	MK	CM	SC	DC	YG	CW	RE	MB	\$MI
EPDs	8	2.3	78	122	27	3	1.1	13	-34	44	1.05	.04	58
% RANK	85	80	20	15	10	95	20	50	50	15	35	50	35

UFAT: 0.38 • UREA: 14.90 • UIMF: 3.20

59 COLE GENESIS 106K

PERCENTAGE(81/72.2) • HOMO POLLED (T) • HET BLACK (T)
3/3/2022 • COLE 106K • NXM2509581

HUNT CREDENTIALS 37C ET COLE GENESIS 86G COLE MISS XRATED 354A	HUNT TESTAMENT 40T JKTW WHISKEY RIVER 985 W MRL X-RATED 014X COLE MISS PRODUCTION 874U KAJO RESPONDER 120R AHCC MISS NORHTSTAR R516 COLEMAN PRODUCTION 608 COLE 42K	ACT BW 98 ADJ WW 779 ADJ YW 1280
---	--	---

AHCC XPENSE ACCOUNT X516 COLE MISS AUSTIN 6120D COLE MISS PRODUCT 1149Y		
--	--	--

	CD	BW	WW	YW	MK	CM	SC	DC	YG	CW	RE	MB	\$MI
EPDs	11	2.4	78	120	29	6	.4	12	-24	44	.8	.37	69
% RANK	50	85	20	20	4	55	80	65	65	15	60	10	10

UFAT: 0.35 • UREA: 14.04 • UIMF: 4.94

60 COLE EXPLORER 107K

PUREBRED(93/82.7) • HET POLLED (T) • HOMO BLACK (T)
3/3/2022 • COLE 107K • NPM2509582

COLE ARCHITECT 08A COLE EXPLORER 22E COLE MISS WINDFALL 126Y	MRL X-RATED 014X COLE MISS LODESTAR 826U COLE WINDFALL 144W COLE 64M KAJO RESPONDER 120R AHCC MISS NORHTSTAR R516 DHVO DEUCE 132R COLE 55N	ACT BW 84 ADJ WW 736 ADJ YW 1233
---	---	---

AHCC XPENSE ACCOUNT X516 COLE MISS AUSTIN 7141E COLE MISS DEUCE 213Z		
---	--	--

	CD	BW	WW	YW	MK	CM	SC	DC	YG	CW	RE	MB	\$MI
EPDs	11	0	74	112	14	6	.7	10	-35	39	1.01	-.19	48
% RANK	45	30	25	20	>95	50	40	80	95	15	75	65	55

UFAT: 0.28 • UREA: 12.54 • UIMF: 3.59

61 COLE EXPLORER 96K

LIM-FLEX(68/60) • HET POLLED (T) • HET BLACK (T)
2/28/2022 • COLE 96K • LFM2509517

COLE ARCHITECT 08A COLE EXPLORER 22E COLE MISS WINDFALL 126Y	MRL X-RATED 014X COLE MISS LODESTAR 826U COLE WINDFALL 144W COLE 64M CONNEALY CONSENSUS BLUE LILLY OF CONANGA 16 COLE FIRST DOWN 46D COLE 44F	ACT BW 94 ADJ WW 771 ADJ YW 1318
---	--	---

CONNEALY CONSENSUS 7229 COLE MISS CONSENSUS 345A COLE 61R		
--	--	--

	CD	BW	WW	YW	MK	CM	SC	DC	YG	CW	RE	MB	\$MI
EPDs	9	1.7	81	120	16	4	.9	9	-24	39	.88	-.02	56
% RANK	80	70	20	30	90	90	50	95	35	35	25	90	75

UFAT: 0.31 • UREA: 15.58 • UIMF: 3.64

62 COLE ENCORE 09K

PUREBRED(90/80.6) • HOMO POLLED (P-3) • HOMO BLACK (T)
1/19/2022 • COLE 09K • NPM2508849

LFLC CHECKING ACCOUNT 701C SYES ENCORE 315E MISS SYES ROSCOE 316X	WULF'S ZIPLOCK N922Z LFLC 701X XTRA GOOD PLND ROSCOE 051R MISS SYES LINEBACKER 317S ROMN TUFF ENUFF 103T COLE MISS XRATED 354A COLE ZAM 62Z COLE MISS PRODUCT 3118A	ACT BW 58 ADJ WW 670 ADJ YW 1066
--	--	---

COLE CADILLAC 05C COLE MISS CADILLAC 052H ET COLE MISS ZAM 6112D		
---	--	--

	CD	BW	WW	YW	MK	CM	SC	DC	YG	CW	RE	MB	\$MI
EPDs	17	-3.4	59	85	18	9	.3	14	-48	30	1.23	-.11	48
% RANK	10	1	80	80	85	10	80	50	60	40	30	40	60

UFAT: 0.18 • UREA: 15.18 • UIMF: 2.20

63 COLE EARNING POWER 28K

LIM-FLEX(75/64.5) • HET POLLED (T) • HOMO BLACK (T)
2/5/2022 • COLE 28K • LFM2509483

MAGS ANCHOR AHCC EARNING POWER 900E ET LVLS 9066U	LH WAR HERO 195W MGS XIPHOPAGOUS LVLS FARMER JOHN 7428P LVLS9066R ROMN TUFF ENUFF 103T COLE MISS XRATED 354A SCHURRTOP MC 2500 COLE 101G	ACT BW 94 ADJ WW 649 ADJ YW 1261
--	---	---

COLE CADILLAC 05C COLE MISS CADILLAC 814F COLE MISS SCHURRTOP 7139T		
--	--	--

	CD	BW	WW	YW	MK	CM	SC	DC	YG	CW	RE	MB	\$MI
EPDs	9	2.5	74	123	15	7	1.1	11	-29	45	1	.09	58
% RANK	80	85	40	25	95	35	30	80	25	20	15	70	60

UFAT: 0.24 • UREA: 14.22 • UIMF: 2.25

64 COLE EARNING POWER 29K

PUREBRED(90/78.6) • HOMO POLLED (T) • HOMO BLACK (P-1)
2/5/2022 • COLE 29K • NPM2509484

MAGS ANCHOR AHCC EARNING POWER 900E ET LVLS 9066U	LH WAR HERO 195W MGS XIPHOPAGOUS LVLS FARMER JOHN 7428P LVLS9066R KAJO RESPONDER 120R AHCC MISS NORHTSTAR R516 COLE 132T COLE MISS KATY MAY 9105W	ACT BW 76 ADJ WW 636 ADJ YW 1141
--	--	---

AHCC XPENSE ACCOUNT X516 COLE BEAUTY 664D ET COLE BEAUTY 276Z		
--	--	--

	CD	BW	WW	YW	MK	CM	SC	DC	YG	CW	RE	MB	\$MI
EPDs	13	.2	66	110	16	8	1.5	16	-28	35	.81	.29	63
% RANK	30	35	55	25	95	20	2	15	>95	25	95	1	2

UFAT: 0.40 • UREA: 11.62 • UIMF: 3.97

65 COLE EARNING POWER 54K

PERCENTAGE(84/72.2) • HOMO POLLED (P-1) • HET BLACK (T)
2/14/2022 • COLE 54K • NXM2509495

MAGS ANCHOR AHCC EARNING POWER 900E ET LVLS 9066U	LH WAR HERO 195W MGS XIPHOPAGOUS LVLS FARMER JOHN 7428P LVLS9066R WULFS RANSOM 3059R ROMN ROBERTA 35R COLE SUDDEN IMPACT 50S COLE MISS PRODUCTION 879U	ACT BW 88 ADJ WW 582 ADJ YW 1098
--	---	---

ROMN TUFF ENUFF 103T COLE MISS TUFF ENUFF 711E COLE MISS IMPACT 105Y		
---	--	--

	CD	BW	WW	YW	MK	CM	SC	DC	YG	CW	RE	MB	\$MI
EPDs	13	0	68	107	16	9	1.4	15	-3	34	.81	.2	60
% RANK	25	30	55	45	95	10	10	25	55	40	60	30	30

UFAT: 0.22 • UREA: 14.10 • UIMF: 2.45

66 COLE EARNING POWER 66K

LIM-FLEX(65/55.5) • HET POLLED (T) • HOMO BLACK (P-1)
2/17/2022 • COLE 66K • LFM2509503

MAGS ANCHOR
AHCC EARNING POWER 900E ET
LVLS 9066U

LH WAR HERO 195W
MGS XIPHOPAGOUS
LVLS FARMER JOHN 7428P
LVLS9066R

ACT BW
92

COLEMAN TRAVELER 797
COLE MISS TRAVELER 012X
COLE 801H

JAUER 353 TRAVELER 589 27
BT EVERELDA ENTENSE 613L
COLE FIRST DOWN 46D
COLE 66T

ADJ WW
638

ADJ YW
1189

	CD	BW	WW	YW	MK	CM	SC	DC	YG	CW	RE	MB	\$MI
EPDs	11	.4	65	111	20	7	1.5	15	-.19	38	.76	.26	61
% RANK	50	40	75	50	60	35	5	25	50	40	40	35	45

UFAT: 0.26 • UREA: 15.56 • UIMF: 2.94

67 COLE EARNING POWER 86K

PUREBRED(95/79.4) • HOMO POLLED (P-2) • HOMO BLACK (T)
2/24/2022 • COLE 86K • NPM2508855

AHCC EARNING POWER 900E ET
COLE EARNING POWER 82H
COLE MISS XRATED 553C

MAGS ANCHOR
LVLS 9066U
MRL X-RATED 014X
COLE MISS LODESTAR 821U

ACT BW
64

SYES CURTAIN CALL 466C
COLE MISS CURTAIN CALL 046H
COLE MISS TUFF ENUFF 711E

WULFS XCLUSIVE 2458X
MISS SYES FRIENDLY 465Z
ROMN TUFF ENUFF 103T
COLE MISS IMPACT 105Y

ADJ WW
733

ADJ YW
1260

	CD	BW	WW	YW	MK	CM	SC	DC	YG	CW	RE	MB	\$MI
EPDs	16	-1.1	68	107	19	9	1	11	-.32	30	.74	.06	55
% RANK	10	15	50	30	75	10	10	75	>95	40	>95	10	15

UFAT: 0.42 • UREA: 15.40 • UIMF: 3.59

68 COLE GENESIS 87K

PERCENTAGE(81/71.9) • HOMO POLLED (T) • HET BLACK (T)
2/25/2022 • COLE 87K • NXM2509514

HUNT CREDENTIALS 37C ET
COLE GENESIS 86G
COLE MISS XRATED 354A

HUNT TESTAMENT 40T
JKTW WHISKEY RIVER 985 W
MRL X-RATED 014X
COLE MISS PRODUCTION 874U

ACT BW
98

CJSL WINDFALL 9072W
CELL 4103B
MAGS YEARBOOK

LVLS SECRET WEAPON 4408K
CJ'S MS ARROWHEAD 456P
S A V MANDAN 5664
MAGS GRETCHEN 855M

ADJ WW
690

ADJ YW
1229

	CD	BW	WW	YW	MK	CM	SC	DC	YG	CW	RE	MB	\$MI
EPDs	8	2	72	108	31	5	1	16	-.22	41	.84	.27	63
% RANK	85	75	40	40	2	70	25	15	70	20	55	20	20

UFAT: 0.28 • UREA: 17.72 • UIMF: 2.54

69 COLE EARNING POWER 88K

LIM-FLEX(71/61.1) • HET POLLED (T) • HET BLACK (T)
2/27/2022 • COLE 88K • LFM2508856

AHCC EARNING POWER 900E ET
COLE EARNING POWER 82H
COLE MISS XRATED 553C

MAGS ANCHOR
LVLS 9066U
MRL X-RATED 014X
COLE MISS LODESTAR 821U

ACT BW
80

CJSL CREED 5042C
COLE MISS CREED 072H
COLE MISS PRODUCTION 8132

MAGS AVIATOR
CJSL 2090Z
COLEMAN PRODUCTION 608
COLE 911J

ADJ WW
720

ADJ YW
1265

	CD	BW	WW	YW	MK	CM	SC	DC	YG	CW	RE	MB	\$MI
EPDs	15	-.2	64	102	20	10	.8	13	-.12	29	.55	.36	64
% RANK	10	25	80	70	60	3	70	50	65	70	75	20	35

UFAT: 0.45 • UREA: 12.86 • UIMF: 3.69

70 COLE FORTUNE 97K

PERCENTAGE(78/69.3) • HOMO POLLED (T) • HOMO BLACK (T)
3/1/2022 • COLE 97K • NXM2509518

COLE CADILLAC 05C
COLE FORTUNE 12F
COLE MISS AUSTIN 3157A

ROMN TUFF ENUFF 103T
COLE MISS XRATED 354A
AHCC XPENSE ACCOUNT X516
COLE MISS TRAVELER 015X

ACT BW
84

COLE ARCHITECT 08A
COLE MISS ARCHITECT 811F
COLE MISS PRODUCTION2105Z

MRL X-RATED 014X
COLE MISS LODESTAR 826U
COLEMAN PRODUCTION 608
ANLC KELLY 0769K

ADJ WW
684

ADJ YW
1179

	CD	BW	WW	YW	MK	CM	SC	DC	YG	CW	RE	MB	\$MI
EPDs	15	-.7	79	125	14	8	.5	15	-.2	46	.98	0	56
% RANK	10	20	15	15	>95	20	80	25	70	10	40	55	45

UFAT: 0.36 • UREA: 14.00 • UIMF: 2.32

71 COLE EARNING POWER 99K

PERCENTAGE(79/67.7) • HOMO POLLED (P-2) • HET BLACK (T)
3/1/2022 • COLE 99K • NXM2508857

AHCC EARNING POWER 900E ET
COLE EARNING POWER 82H
COLE MISS XRATED 553C

MAGS ANCHOR
LVLS 9066U
MRL X-RATED 014X
COLE MISS LODESTAR 821U

ACT BW
76

COLE CADILLAC 05C
COLE MISS CADILLAC 036H ET
COLE MISS TRAVELER 029X

ROMN TUFF ENUFF 103T
COLE MISS XRATED 354A
COLEMAN TRAVELER 797
COLE 91L

ADJ WW
703

ADJ YW
1144

	CD	BW	WW	YW	MK	CM	SC	DC	YG	CW	RE	MB	\$MI
EPDs	14	-.1	62	95	22	9	.6	12	-.25	32	.89	.11	55
% RANK	20	30	75	70	40	10	70	65	65	45	50	40	50

UFAT: 0.24 • UREA: 14.70 • UIMF: 2.87

BUYERS WHO DO
THEIR OWN
HAULING WILL
RECEIVE A \$100
PER HEAD CREDIT.



72 COLE GAMECHANGER 81K

PERCENTAGE(85/76.6) • HOMO POLLED (P-2) • RED
2/22/2022 • COLE 81K • NXM2509460

HUNT CREDENTIALS 37C ET WZRK GAME CHANGER 4015G WZRK MISS TUFFENUFF 4015B	HUNT TESTAMENT 40T JKTW WHISKEY RIVER 985 W ROMN TUFF ENUFF 103T WZRK MISS MTO 0010X MAGS ALI TMCK NINA 17X COLE 132T COLE MISS KATY MAY 9105W	ACT BW 82 ADJ WW 753 ADJ YW 1279
---	---	---

	CD	BW	WW	YW	MK	CM	SC	DC	YG	CW	RE	MB	\$MI
EPDs	11	.9	78	122	31	7	1.3	17	-.18	50	.77	.29	66
% RANK	50	50	20	15	2	35	10	10	75	10	65	20	15

UFAT: 0.47 • UREA: 11.56 • UIMF: 4.59



WZRK GAME CHANGER 4015G • Sire of Lots 72-82

73 COLE GAMECHANGER 70K

PUREBRED(89/77.7) • HOMO POLLED (P-2) • RED
2/18/2022 • COLE 70K • NPM2509458

HUNT CREDENTIALS 37C ET WZRK GAME CHANGER 4015G WZRK MISS TUFFENUFF 4015B	HUNT TESTAMENT 40T JKTW WHISKEY RIVER 985 W ROMN TUFF ENUFF 103T WZRK MISS MTO 0010X MAGS ZODIAC COLE MISS REGIS 421B MRL X-RATED 014X COLE MISS LODESTAR 821U	ACT BW 76 ADJ WW 693 ADJ YW 1219
---	---	---

	CD	BW	WW	YW	MK	CM	SC	DC	YG	CW	RE	MB	\$MI
EPDs	13	-1.1	69	106	30	8	1.2	16	-.29	47	.93	.1	57
% RANK	30	15	45	35	4	20	10	15	>95	3	85	5	10

UFAT: 0.25 • UREA: 15.38 • UIMF: 3.17

74 COLE GAMECHANGER 56K

LIM-FLEX(75/66.3) • HOMO POLLED (P-2) • RED
2/14/2022 • COLE 56K • LFM2509457

HUNT CREDENTIALS 37C ET WZRK GAME CHANGER 4015G WZRK MISS TUFFENUFF 4015B	HUNT TESTAMENT 40T JKTW WHISKEY RIVER 985 W ROMN TUFF ENUFF 103T WZRK MISS MTO 0010X BALDRIDGE KABOOM K243 KCF PARKA OF CONANGA 241 COLE FIRST DOWN 46D COLE 148F	ACT BW 82 ADJ WW 703 ADJ YW 1311
---	--	---

	CD	BW	WW	YW	MK	CM	SC	DC	YG	CW	RE	MB	\$MI
EPDs	11	.8	70	111	26	8	1.6	15	-.24	44	.72	.23	62
% RANK	50	50	55	50	10	20	5	25	35	25	45	40	45

UFAT: 0.41 • UREA: 12.50 • UIMF: 4.00

75 COLE GAMECHANGER 39K

LIM-FLEX(75/66.6) • HOMO POLLED (P-2) • BLACK
2/9/2022 • COLE 39K • LFM2509454

HUNT CREDENTIALS 37C ET WZRK GAME CHANGER 4015G WZRK MISS TUFFENUFF 4015B	HUNT TESTAMENT 40T JKTW WHISKEY RIVER 985 W ROMN TUFF ENUFF 103T WZRK MISS MTO 0010X COLEMAN CHARLO 0256 COLEMAN DONNA 714 COLE ZONE 89Z COLE MISS FINALTIME 961W	ACT BW 72 ADJ WW 738 ADJ YW 1199
---	--	---

	CD	BW	WW	YW	MK	CM	SC	DC	YG	CW	RE	MB	\$MI
EPDs	15	-1.2	73	114	28	9	1.4	13	-.2	46	.67	.16	60
% RANK	10	15	45	45	4	10	10	50	45	20	55	55	55

UFAT: 0.37 • UREA: 12.70 • UIMF: 2.55

76 COLE GAMECHANGER 65K

PUREBRED(90/80.7) • HOMO POLLED (P-2) • BLACK
2/17/2022 • COLE 65K • NPM2509502

HUNT CREDENTIALS 37C ET WZRK GAME CHANGER 4015G WZRK MISS TUFFENUFF 4015B	HUNT TESTAMENT 40T JKTW WHISKEY RIVER 985 W ROMN TUFF ENUFF 103T WZRK MISS MTO 0010X COLE ZONE 89Z COLE MISS NASA 975W AHCC XPENSE ACCOUNT X516 COLE MISS JUNEAU 370A	ACT BW 88 ADJ WW 734 ADJ YW 1277
---	--	---

	CD	BW	WW	YW	MK	CM	SC	DC	YG	CW	RE	MB	\$MI
EPDs	11	.6	76	122	28	7	1.2	13	-.29	47	.83	.03	57
% RANK	45	40	20	10	10	35	10	60	>95	3	95	10	10

UFAT: 0.32 • UREA: 14.56 • UIMF: 3.38

77 COLE GAMECHANGER 72K

LIM-FLEX(75/66.7) • HOMO POLLED (P-2) • BLACK
2/19/2022 • COLE 72K • LFM2509459

HUNT CREDENTIALS 37C ET WZRK GAME CHANGER 4015G WZRK MISS TUFFENUFF 4015B	HUNT TESTAMENT 40T JKTW WHISKEY RIVER 985 W ROMN TUFF ENUFF 103T WZRK MISS MTO 0010X COLEMAN CHARLO 0256 COLEMAN DONNA 714 COLE SUDDEN IMPACT 50S COLE 923J	ACT BW 88 ADJ WW 788 ADJ YW 1262
---	--	---

	CD	BW	WW	YW	MK	CM	SC	DC	YG	CW	RE	MB	\$MI
EPDs	12	1.6	79	118	30	7	1.5	14	-.3	38	.82	.12	61
% RANK	35	70	25	35	2	35	10	35	25	40	35	65	50

UFAT: 0.22 • UREA: 17.50 • UIMF: 2.72

78 COLE GAMECHANGER 90K

PUREBRED(93/83.7) • HOMO POLLED (P-2) • BLACK
2/27/2022 • COLE 90K • NPM2509461

HUNT CREDENTIALS 37C ET WZRK GAME CHANGER 4015G WZRK MISS TUFFENUFF 4015B	HUNT TESTAMENT 40T JKTW WHISKEY RIVER 985 W ROMN TUFF ENUFF 103T WZRK MISS MTO 0010X WULFS XCLUSIVE 2458X MISS SYES FRIENDLY 465Z COLE BUSINESSMAN 104B COLE MISS TRAVELER 0103X	ACT BW 76 ADJ WW 723 ADJ YW 1289
---	---	---

	CD	BW	WW	YW	MK	CM	SC	DC	YG	CW	RE	MB	\$MI
EPDs	10	1	74	117	30	5	1.3	14	-.33	48	.95	.13	60
% RANK	55	50	25	10	4	70	3	50	>95	2	80	4	4

UFAT: 0.44 • UREA: 14.86 • UIMF: 3.85

79 COLE GAMECHANGER 125K

LIM-FLEX(75/66.7) • HOMO POLLED (P-2) • BLACK
3/11/2022 • COLE 125K • LFM2509588

HUNT CREDENTIALS 37C ET WZRK GAME CHANGER 4015G WZRK MISS TUFFENUFF 4015B	HUNT TESTAMENT 40T JKTW WHISKEY RIVER 985 W ROMN TUFF ENUFF 103T WZRK MISS MTO 0010X COLEMAN CHARLO 0256 COLEMAN DONNA 714 MRL X-RATED 014X COLE MISS KATY MAY 9105W	ACT BW 86 ADJ WW 798 ADJ YW 1368
---	---	---

COLEMAN BRAVO 6313 COLE MISS BRAVO 938G COLE MISS XRATED 3125A		
--	--	--

	CD	BW	WW	YW	MK	CM	SC	DC	YG	CW	RE	MB	\$MI
EPDs	11	1.3	80	124	29	7	1.4	15	-23	46	.83	.07	59
% RANK	50	60	20	25	3	35	10	25	40	20	30	75	60

UFAT: 0.34 • UREA: 15.80 • UIMF: 3.21

81 COLE GAMECHANGER 31K

PUREBRED(87/77.3) • HOMO POLLED (P-2) • BLACK
2/7/2022 • COLE 31K • NPM2509452

HUNT CREDENTIALS 37C ET WZRK GAME CHANGER 4015G WZRK MISS TUFFENUFF 4015B	HUNT TESTAMENT 40T JKTW WHISKEY RIVER 985 W ROMN TUFF ENUFF 103T WZRK MISS MTO 0010X MRL X-RATED 014X COLE MISS LODESTAR 826U COLEMAN PRODUCTION 608 COLE 524R	ACT BW 88 ADJ WW 631 ADJ YW 1271
---	---	---

COLE ARCHITECT 08A COLE MISS ARCHITECT 949G COLE MISS PRODUCTION 101Y		
---	--	--

	CD	BW	WW	YW	MK	CM	SC	DC	YG	CW	RE	MB	\$MI
EPDs	9	1.8	75	116	14	5	1.2	17	-27	44	.89	.09	58
% RANK	70	65	25	15	>95	70	4	10	>95	4	90	5	10

UFAT: 0.41 • UREA: 13.36 • UIMF: 2.68



A dozen Coleman registered Limousin and Lim-Flex heifers sold in 2019 through Tyson Meats in Pasco, Washington. **Note** that 92% graded Choice with every animal turning in a Yield Grade 1 or 2 carcass. These results are proof positive that Coleman genetics have the proven ability to grow, grade and yield. A profitable combination indeed.

Birth Date	Spring 2018
Harvest Date	12/23/19
% Limousin	Limousin & Lim-Flex
# Head	12 Heifer
Dressed Price	\$197.27
Ave. Live Weight	1,448 lbs.
Ave. Carcass Weight	902 lbs.
Dressing %	62.3
# Yield Grade 1	4
# Yield Grade 2	8
# Head Choice	11
% Choice	92
# Head Select	1
Avg. Price Per Head	\$1,778
Per Head Premium	\$48.86

80 COLE GAMECHANGER 133K

PUREBRED(87/77.8) • HOMO POLLED (P-2) • BLACK
3/18/2022 • COLE 133K • NPM2509592

HUNT CREDENTIALS 37C ET WZRK GAME CHANGER 4015G WZRK MISS TUFFENUFF 4015B	HUNT TESTAMENT 40T JKTW WHISKEY RIVER 985 W ROMN TUFF ENUFF 103T WZRK MISS MTO 0010X KAJO RESPONDER 120R AHCC MISS NORHTSTAR R516 COLEMAN TRAVELER 797 COLE 484P	ACT BW 96 ADJ WW 806 ADJ YW 1317
---	---	---

AHCC XPENSE ACCOUNT X516 COLE MISS AUSTIN 3157A COLE MISS TRAVELER 015X		
---	--	--

	CD	BW	WW	YW	MK	CM	SC	DC	YG	CW	RE	MB	\$MI
EPDs	11	1.8	76	120	32	6	1.2	17	-24	46	.8	.18	62
% RANK	45	65	20	10	2	50	10	10	>95	3	95	3	3

UFAT: 0.38 • UREA: 14.84 • UIMF: 3.81

82 COLE GAMECHANGER 131K

PUREBRED(93/83.6) • DOUBLE POLLED • BLACK
3/18/2022 • COLE 131K • NPM2509591

HUNT CREDENTIALS 37C ET WZRK GAME CHANGER 4015G WZRK MISS TUFFENUFF 4015B	HUNT TESTAMENT 40T JKTW WHISKEY RIVER 985 W ROMN TUFF ENUFF 103T WZRK MISS MTO 0010X WULFS XCLUSIVE 2458X MISS SYES FRIENDLY 465Z COLE ZONE 89Z COLE MISS PRODUCTION 183Y	ACT BW 66 ADJ WW 699 ADJ YW 1250
---	--	---

SYES CURTAIN CALL 466C COLE MISS CURTAIN CALL 986G COLE MISS ZONE 665D		
--	--	--

	CD	BW	WW	YW	MK	CM	SC	DC	YG	CW	RE	MB	\$MI
EPDs	16	-2.1	63	101	30	9	1.1	13	-3	42	.92	.18	58
% RANK	10	5	65	45	4	10	10	60	>95	10	85	3	10

UFAT: 0.55 • UREA: 14.74 • UIMF: 4.07

83 COLE EXPLORER 108K

PERCENTAGE(77/68.2) • HOMO POLLED (P-3) • HOMO BLACK (T)
3/3/2022 • COLE 108K • NXM2509583

COLE ARCHITECT 08A COLE EXPLORER 22E COLE MISS WINDFALL 126Y	MRL X-RATED 014X COLE MISS LODESTAR 826U COLE WINDFALL 144W COLE 64M MAGS WINSTON MAGS XTRA REST COLE 132T COLE MISS PRODUCTION 936W	ACT BW 90 ADJ WW 709 ADJ YW 1214
--	---	---

MAGS AVIATOR COLE MISS AVIATOR 862F COLE279Z		
--	--	--

	CD	BW	WW	YW	MK	CM	SC	DC	YG	CW	RE	MB	\$MI
EPDs	7	2.1	80	118	13	3	.4	10	-16	38	.76	.04	57
% RANK	95	75	15	20	>95	95	90	85	75	30	65	50	40

UFAT: 0.23 • UREA: 14.54 • UIMF: 3.14

84 COLE GAMECHANGER 120K

PUREBRED(90/79.9) • HOMO POLLED (P-2) • RED
3/8/2022 • COLE 120K • NPM2509586

HUNT CREDENTIALS 37C ET WZRK GAME CHANGER 4015G WZRK MISS TUFFENUFF 4015B	HUNT TESTAMENT 40T JKTW WHISKEY RIVER 985 W ROMN TUFF ENUFF 103T WZRK MISS MTO 0010X ROMN TUFF ENUFF 103T COLE MISS XRATED 354A COLE 132T COLE MISS PRODUCTION 936W	ACT BW 84 ADJ WW 754 ADJ YW 1246
---	--	---

COLE CADILLAC 05C COLE MISS CADILLAC 926G COLE279Z		
--	--	--

	CD	BW	WW	YW	MK	CM	SC	DC	YG	CW	RE	MB	\$MI
EPDs	10	1.3	77	114	25	6	.6	14	-17	44	.66	.37	68
% RANK	55	55	15	15	20	50	40	50	>95	4	>95	1	1

UFAT: 0.38 • UREA: 11.54 • UIMF: 5.11

85

COLE GENESIS 73K ET

PUREBRED(93/83.2) • HOMO POLLED (P-2) • RED
2/19/2022 • COLE 73K • NPM2508744

HUNT CREDENTIALS 37C ET
COLE GENESIS 86G
COLE MISS XRATED 354A

HUNT TESTAMENT 40T
JKTW WHISKEY RIVER 985 W
MRL X-RATED 014X
COLE MISS PRODUCTION 874U
LESF ASPHALT 9N
CARROUSELS HAPPY GIRL
HC FINAL TIME 40T
COLE 50K

ACT BW
80
ADJ WW
581
ADJ YW
1092

3GE-EPDs

	CD	BW	WW	YW	MK	CM	SC	DC	YG	CW	RE	MB	\$MI
EPDs	15	-.3	62	92	29	8	.7	16	-.09	22	.4	.63	72
% RANK	15	25	70	65	5	20	30	15	>95	65	>95	1	1

UFAT: 0.26 • UREA: 12.70 • UIMF: 3.44



MAGS BEAUTY 276Z • Dam of Lot 85

86

COLE FORTUNE 10SK

PUREBRED(90/79.6) • HOMO POLLED (T) • RED
3/3/2022 • COLE 105K • NPM2509580

COLE CADILLAC 05C
COLE FORTUNE 12F
COLE MISS AUSTIN 3157A

ROMN TUFF ENUFF 103T
COLE MISS XRATED 354A
AHCC XPENSE ACCOUNT X516
COLE MISS TRAVELER 015X
GPFF BLAQUE RULON
AMY JO DHAN 20L
COLE FIRST DOWN 46D
COLE 37F

ACT BW
74
ADJ WW
617
ADJ YW
1070

	CD	BW	WW	YW	MK	CM	SC	DC	YG	CW	RE	MB	\$MI
EPDs	16	-2.1	65	104	19	9	.4	10	-.24	24	.79	-.14	47
% RANK	10	5	60	40	75	10	70	80	>95	60	95	50	65

UFAT: 0.21 • UREA: 16.24 • UIMF: 2.18

87

COLE EXPENSE 124K

PERCENTAGE(84/74.5) • HOMO POLLED (P-2) • HOMO BLACK (P-1)
3/10/2022 • COLE 124K • NXM2509466

AHCC XPENSE ACCOUNT X516
COLE EXPENSE 77E ET
COLE BEAUTY 276Z

KAJO RESPONDER 120R
AHCC MISS NORHTSTAR R516
COLE 132T
COLE MISS KATY MAY 9105W
ROMN TUFF ENUFF 103T
COLE MISS XRATED 354A
COLEMAN PRODUCTION 608
COLE 100G

ACT BW
76
ADJ WW
727
ADJ YW
1289

	CD	BW	WW	YW	MK	CM	SC	DC	YG	CW	RE	MB	\$MI
EPDs	14	-1	56	88	20	6	.3	11	-.37	21	.91	.3	61
% RANK	20	15	90	80	60	55	90	75	45	80	50	15	25

UFAT: 0.57 • UREA: 14.08 • UIMF: 3.72

88

COLE EXPENSE 121K

PUREBRED(87/77) • HET POLLED (T) • HET BLACK (T)
3/8/2022 • COLE 121K • NPM2509465

AHCC XPENSE ACCOUNT X516
COLE EXPENSE 77E ET
COLE BEAUTY 276Z

KAJO RESPONDER 120R
AHCC MISS NORHTSTAR R516
COLE 132T
COLE MISS KATY MAY 9105W
CTCA BUCKEYE BULL 8261U
MRL TASTE OF COUNTRY 790T
COLEMAN PRODUCTION 608
COLE 93N

ACT BW
82
ADJ WW
691
ADJ YW
1217

	CD	BW	WW	YW	MK	CM	SC	DC	YG	CW	RE	MB	\$MI
EPDs	10	.7	58	87	20	5	.9	12	-.33	23	.8	-.04	49
% RANK	55	45	80	75	65	70	20	70	>95	60	95	20	55

UFAT: 0.24 • UREA: 15.14 • UIMF: 1.81

89

COLE BACKSTAGE 94K

PERCENTAGE(78/69.1) • HOMO POLLED (P-2) • HOMO BLACK (P-3)
2/28/2022 • COLE 94K • NXM2509462

SYES BACKSTAGE 466B
COLE BACKSTAGE 04E
COLE MISS REGIS 540C

DLVL XEROX 023X
MISS SYES FRIENDLY 465Z
COLEMAN REGIS 122
COLE 4142P
ROMN TUFF ENUFF 103T
COLE MISS XRATED 354A
COLE 132T
COLE MISS PRODUCTION 939W

ACT BW
86
ADJ WW
686
ADJ YW
1185

	CD	BW	WW	YW	MK	CM	SC	DC	YG	CW	RE	MB	\$MI
EPDs	11	1.4	68	102	16	4	.2	10	-.23	32	.72	-.02	52
% RANK	50	60	55	55	95	85	95	85	65	45	70	60	65

UFAT: 0.31 • UREA: 16.18 • UIMF: 2.85

90

COLE BACKSTAGE 113K

PERCENTAGE(78/68.5) • HOMO POLLED (P-2) • HET BLACK (T)
3/6/2022 • COLE 113K • NXM2509464

SYES BACKSTAGE 466B
COLE BACKSTAGE 04E
COLE MISS REGIS 540C

DLVL XEROX 023X
MISS SYES FRIENDLY 465Z
COLEMAN REGIS 122
COLE 4142P
ROMN TUFF ENUFF 103T
COLE MISS XRATED 354A
COLE YELLER 133Y
COLE MISS MAGNUM 7101T

ACT BW
78
ADJ WW
711
ADJ YW
1225

	CD	BW	WW	YW	MK	CM	SC	DC	YG	CW	RE	MB	\$MI
EPDs	15	-1	68	101	18	7	.1	10	-.15	30	.56	-.12	47
% RANK	10	15	55	55	80	35	95	85	80	55	85	75	85

UFAT: 0.56 • UREA: 16.10 • UIMF: 2.71

91

COLE BACKSTAGE 132K

LIM-FLEX(75/66.9) • HET POLLED (T) • HOMO BLACK (P-3)
3/18/2022 • COLE 132K • LFM2509468

SYES BACKSTAGE 466B
COLE BACKSTAGE 04E
COLE MISS REGIS 540C

DLVL XEROX 023X
MISS SYES FRIENDLY 465Z
COLEMAN REGIS 122
COLE 4142P
KAJO RESPONDER 120R
AHCC MISS NORHTSTAR R516
COLEMAN PRODUCTION 608
COLE 10K

ACT BW
88
ADJ WW
730
ADJ YW
1237

	CD	BW	WW	YW	MK	CM	SC	DC	YG	CW	RE	MB	\$MI
EPDs	12	.3	67	106	17	6	.7	11	-.25	29	.67	-.05	51
% RANK	35	35	70	60	85	55	80	80	35	70	55	95	95

UFAT: 0.37 • UREA: 15.44 • UIMF: 3.27

92 COLE BACKSTAGE 135K

LIM-FLEX(75/66.5) • HOMO POLLED (P-2) • HOMO BLACK (T)
3/23/2022 • COLE 135K • LFM2509469

SYES BACKSTAGE 466B COLE BACKSTAGE 04E COLE MISS REGIS 540C	DLVL XEROX 023X MISS SYES FRIENDLY 465Z COLEMAN REGIS 122 COLE 4142P	ACT BW 90
COLE ARCHITECT 08A COLE MISS ARCHITECT 843F COLE MISS PRODUCTION 192Y	MRL X-RATED 014X COLE MISS LODESTAR 826U COLEMAN PRODUCTION 608 COLE 127L	ADJ WW 789 ADJ YW 1391

	CD	BW	WW	YW	MK	CM	SC	DC	YG	CW	RE	MB	\$MI
EPDs	11	.7	78	114	16	5	.9	12	-.1	38	.62	-.07	52
% RANK	50	45	25	45	90	75	50	65	75	40	65	95	90

UFAT: 0.70 • UREA: 13.94 • UIMF: 3.59

93 COLE BACKSTAGE 137K

LIM-FLEX(75/66.6) • HOMO POLLED (P-1) • HOMO BLACK (P-3)
3/24/2022 • COLE 137K • LFM2509471

SYES BACKSTAGE 466B COLE BACKSTAGE 04E COLE MISS REGIS 540C	DLVL XEROX 023X MISS SYES FRIENDLY 465Z COLEMAN REGIS 122 COLE 4142P	ACT BW 80
COLE ARCHITECT 08A COLE MISS ARCHITECT 914G COLE MISS CONSENSUS 541C	MRL X-RATED 014X COLE MISS LODESTAR 826U CONNELLY CONSENSUS 7229 COLE MISS BLACK TANK 721T	ADJ WW 781 ADJ YW 1349

	CD	BW	WW	YW	MK	CM	SC	DC	YG	CW	RE	MB	\$MI
EPDs	13	-.3	79	115	12	6	1.1	11	-.22	34	.77	-.1	52
% RANK	25	25	25	40	>95	55	35	80	40	55	40	>95	90

UFAT: 0.29 • UREA: 16.56 • UIMF: 2.54

94 COLE BACKSTAGE 147K

PERCENTAGE(81/72.2) • HOMO POLLED (P-2) • BLACK
4/6/2022 • COLE 147K • NXM2509478

SYES BACKSTAGE 466B COLE BACKSTAGE 04E COLE MISS REGIS 540C	DLVL XEROX 023X MISS SYES FRIENDLY 465Z COLEMAN REGIS 122 COLE 4142P	ACT BW 88
COLE ZAM 62Z COLE MISS ZAM 7151E COLE MISS XRATED 354A	AHCC WESTWIND W544 COLE MISS LODESTAR 826U MRL X-RATED 014X COLE MISS PRODUCTION 874U	ADJ WW 831 ADJ YW 1313

	CD	BW	WW	YW	MK	CM	SC	DC	YG	CW	RE	MB	\$MI
EPDs	13	.3	76	115	22	6	.6	10	-.14	41	.62	.07	57
% RANK	25	35	25	25	40	55	60	85	80	20	80	45	45

UFAT: 0.42 • UREA: 13.72 • UIMF: 4.16

95 COLE AVIATOR 129K

LIM-FLEX(52/45.8) • HOMO POLLED (T) • HOMO BLACK (P-2)
3/17/2022 • COLE 129K • LFM2509467

MAGS AVIATOR COLE AVIATOR 80F COLE MISS TRAVELER 012X	MAGS WINSTON MAGS XTRA REST COLEMAN TRAVELER 797 COLE 801H	ACT BW 98
CONNELLY CONSENSUS 7229 COLE MISS CONSENSUS 559C COLE 129R	CONNELLY CONSENSUS BLUE LILLY OF CONANGA 16 COLE 11H COLE 42K	ADJ WW 781 ADJ YW 1303

	CD	BW	WW	YW	MK	CM	SC	DC	YG	CW	RE	MB	\$MI
EPDs	9	2.1	71	112	25	4	.5	14	-.06	27	.38	.39	66
% RANK	80	80	50	50	15	90	85	35	85	80	95	15	20

UFAT: 0.47 • UREA: 13.12 • UIMF: 4.21

96 COLE AVIATOR 142K

LIM-FLEX(60/54) • HET POLLED (T) • HOMO BLACK (P-2)
4/4/2022 • COLE 142K • LFM2509474

MAGS AVIATOR COLE AVIATOR 80F COLE MISS TRAVELER 012X	MAGS WINSTON MAGS XTRA REST COLEMAN TRAVELER 797 COLE 801H	ACT BW 76
MAGS AVIATOR COLE MISS AVIATOR 879F COLE 645S	MAGS WINSTON MAGS XTRA REST COLE BLACK TANK 24P COLE 019K	ADJ WW 740 ADJ YW 1207

	CD	BW	WW	YW	MK	CM	SC	DC	YG	CW	RE	MB	\$MI
EPDs	15	-.12	59	94	22	9	.1	14	-.07	17	.37	.16	54
% RANK	10	15	95	85	35	10	>95	35	80	>95	95	55	80

UFAT: 0.36 • UREA: 11.58 • UIMF: 4.02

97 COLE BACKSTAGE 136K

LIM-FLEX(62/55.1) • HOMO POLLED (T) • HET BLACK (T)
3/24/2022 • COLE 136K • LFM2509470

SYES BACKSTAGE 466B COLE BACKSTAGE 04E COLE MISS REGIS 540C	DLVL XEROX 023X MISS SYES FRIENDLY 465Z COLEMAN REGIS 122 COLE 4142P	ACT BW 82
COLEMAN REGIS 122 COLE MISS REGIS 549C COLE 99R	COLEMAN REGIS 904 COLEMAN EVERELDA ENTENSE LVLS 842L COLE 65M	ADJ WW 744 ADJ YW 1245

	CD	BW	WW	YW	MK	CM	SC	DC	YG	CW	RE	MB	\$MI
EPDs	13	-.6	69	105	19	6	1	8	-.03	37	.39	.15	57
% RANK	25	20	60	65	70	55	35	95	90	45	90	60	70

UFAT: 0.33 • UREA: 13.26 • UIMF: 2.09



"We have been using Limousin genetics for more than 50 years and Coleman Limousin bulls for 20 years. We like the longevity of the Lim-Flex females and the feeder calves sired by Coleman bulls are always in demand."

*Dick DeCock
4L Land & Livestock, Forsyth, MT*

Pictured: Jordan, Kallie, Kaysa, Kenlee, Mark, Kathy & Dick DeCock

98 COLE BACKSTAGE 146K

PUREBRED(87/78) • HOMO POLLED (P-2) • HOMO BLACK (P-3)
4/6/2022 • COLE 146K • NPM2509477

SYES BACKSTAGE 466B COLE BACKSTAGE 04E COLE MISS REGIS 540C	DLVL XEROX 023X MISS SYES FRIENDLY 465Z COLEMAN REGIS 122 COLE 4142P KAJO RESPONDER 120R AHCC MISS WULF HUNT R544 AUTO DOLLAR GENERAL 122R COLE MISS MAGNUM 714T	ACT BW 84 ADJ WW 741 ADJ YW 1280
--	---	---

AHCC WESTWIND W544 COLE MISS WESTWIND 3144A COLE MISS GENERAL 945W		
---	--	--

	CD	BW	WW	YW	MK	CM	SC	DC	YG	CW	RE	MB	\$MI
EPDs	15	-.3	69	104	19	8	.7	9	-.2	35	.61	-1	49
% RANK	15	25	45	40	75	20	40	85	>95	25	>95	35	55

UFAT: 0.39 • UREA: 13.52 • UIMF: 3.36

99 COLE BACKSTAGE 148K

LIM-FLEX(62/55.3) • HOMO POLLED (P-3) • HOMO BLACK (T)
4/11/2022 • COLE 148K • LFM2509479

SYES BACKSTAGE 466B COLE BACKSTAGE 04E COLE MISS REGIS 540C	DLVL XEROX 023X MISS SYES FRIENDLY 465Z COLEMAN REGIS 122 COLE 4142P CONNEALY CAPITALIST 028 COLEMAN DONNA 714 MRL X-RATED 014X COLE 28R	ACT BW 74 ADJ WW 707 ADJ YW 1101
--	---	---

COLEMAN VENTURE 403 COLE MISS VENTURE 7105E COLE MISS XRATED 388A		
--	--	--

	CD	BW	WW	YW	MK	CM	SC	DC	YG	CW	RE	MB	\$MI
EPDs	15	-2.6	62	90	16	7	1	10	-.13	22	.46	0	50
% RANK	10	3	85	90	90	35	35	85	65	90	85	85	95

UFAT: 0.38 • UREA: 13.92 • UIMF: 3.20

100 COLE BACKSTAGE 149K

LIM-FLEX(75/66.6) • HOMO POLLED (P-2) • HOMO BLACK (T)
4/11/2022 • COLE 149K • LFM2509480

SYES BACKSTAGE 466B COLE BACKSTAGE 04E COLE MISS REGIS 540C	DLVL XEROX 023X MISS SYES FRIENDLY 465Z COLEMAN REGIS 122 COLE 4142P MRL X-RATED 014X COLE MISS LODESTAR 826U COLEMAN TRAVELER 797 COLE 91L	ACT BW 86 ADJ WW 765 ADJ YW 1230
--	--	---

COLE ARCHITECT 08A COLE MISS ARCHITECT 841F ET COLE MISS TRAVELER 029X		
---	--	--

	CD	BW	WW	YW	MK	CM	SC	DC	YG	CW	RE	MB	\$MI
EPDs	10	.6	74	109	17	4	1	11	-.13	37	.68	-.13	49
% RANK	65	45	40	55	85	90	50	80	65	45	55	>95	>95

UFAT: 0.61 • UREA: 14.82 • UIMF: 2.61

JOIN US THIS FALL FOR OUR BI-ANNUAL FEMALE SALE

THE Discovery Sale



of 2023

10.12.23 • 7 p.m.
Ninepipes Lodge • Charlo, Montana



Larry & Anita
Coleman
(406) 644-2300



Trent & Melissa
Coleman
(406) 644-2707

SALE MANAGEMENT:



Kiley McKinna (402) 350-3447
Wiley Fanta (320) 287-0751
mcmarketingsales@aol.com
mcmarketingmanagement.com

SALE CONSULTANTS:

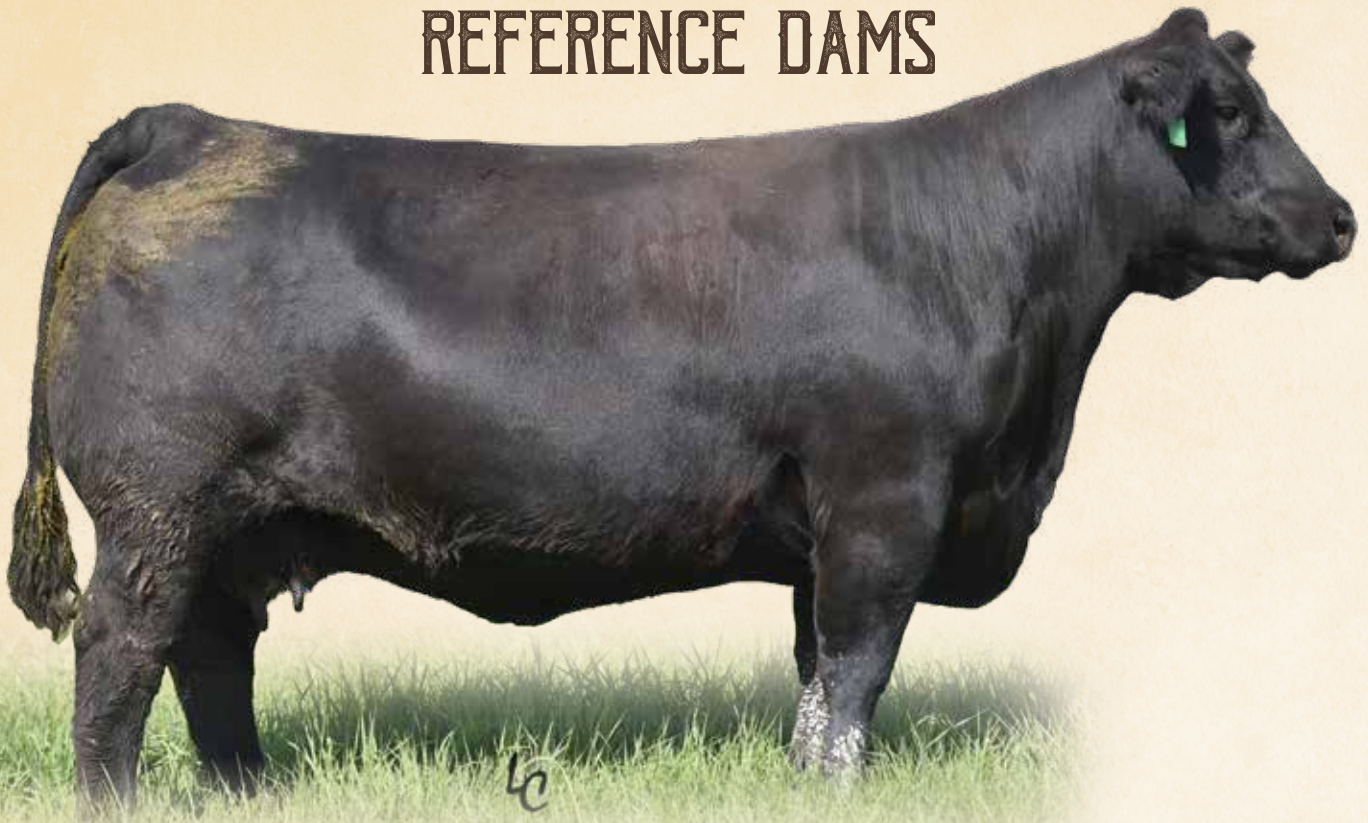
Randy Ratliff, R&R Marketing (615) 330-2735

AUCTIONEER:

Chisum Peterson (605) 720-4214

45TH ANNUAL BULL SALE

REFERENCE DAMS



COLE Beauty 276Z is the epitome of a donor. A donor and descendant of the storied COLE Miss Katymay 9105W, this long lineage of donors is proof of this maternal bloodline's greatness. COLE Beauty 276Z has achieved her spot as one of the Limousin breed's all-time great donors with 94 total registered progeny at NALF—her influence not only in our program but the entire Limousin breed is rooted deep. She has been matched with a variety of the Limousin and Angus breed's most popular sires with impressive results including unmatched uniformity. What's more, she is among the breed's elite in both Marbling and Mainstream Terminal Index with rankings in the top 1%. Study the seven sons or hers selling in this year's offering and decide which one best fits your operations. Now that she is deceased, the opportunities to obtain her elite genetics will be increasingly rare.

Sons selling: Lots 5, 6, 7, 8 and 85.

	CD	BW	WW	YW	MK	CM	SC	DC	YG	CW	RE	MB	\$MI
COLE BEAUTY 276Z PUREBRED(100/89) - COLE 132T x COLE MISS KATYMAY 9105W - Sons selling: Lots 5, 6, 7, 8 & 85	9	3.2	62	91	22	2	0.8	13	-0.34	25	0.82	0.27	61
COLE MISS PRODUCTION 104Y LIM-FLEX(50/45.1) - COLEMAN PRODUCTION 608 x COLE 50K - Son sells: Lot 4	11	1.3	65	99	23	6	0.1	14	-0.10	36	0.58	0.67	75
COLE MISS XRATED 354A LIM-FLEX(75/64.9) - MRL X-RATED 014X x COLE MISS PRODUCTION 874U - Son sells: Lot 3	11	1.6	75	106	30	5	-0.2	10	-0.25	34	0.95	0.49	72
COLE MISS ZAM 6112D LIM-FLEX(75/66.1) - COLE ZAM 62Z x COLE MISS PRODUCT 3118A - Son sells: Lot 13	10	2.0	80	127	25	4	0.9	16	-0.19	59	1.04	0.32	68
COLE MISS ZONE 5110C PUREBRED(87/77) - COLE ZONE 89Z x COLE MISS WINDFALL 257Z - Sons sell: Lots 25, 26 & 27	8	2.6	75	118	30	5	0.6	6	-0.28	52	0.99	-0.03	54



COLE MISS PRODUCTION 104Y



COLE MISS XRATED 354A



COLE MISS ZAM 6112D

COLEMAN LIMOUSIN RANCH

Thank You

NOTES



Yearling Bulls _____ Gross _____ Avg. _____



24/7/365

Real-time. Industry Relevant.

Think Limousin. Think L365.



NORTH REGION - Sarah Johnson
614/266-2646, Sarah@limousin365.com

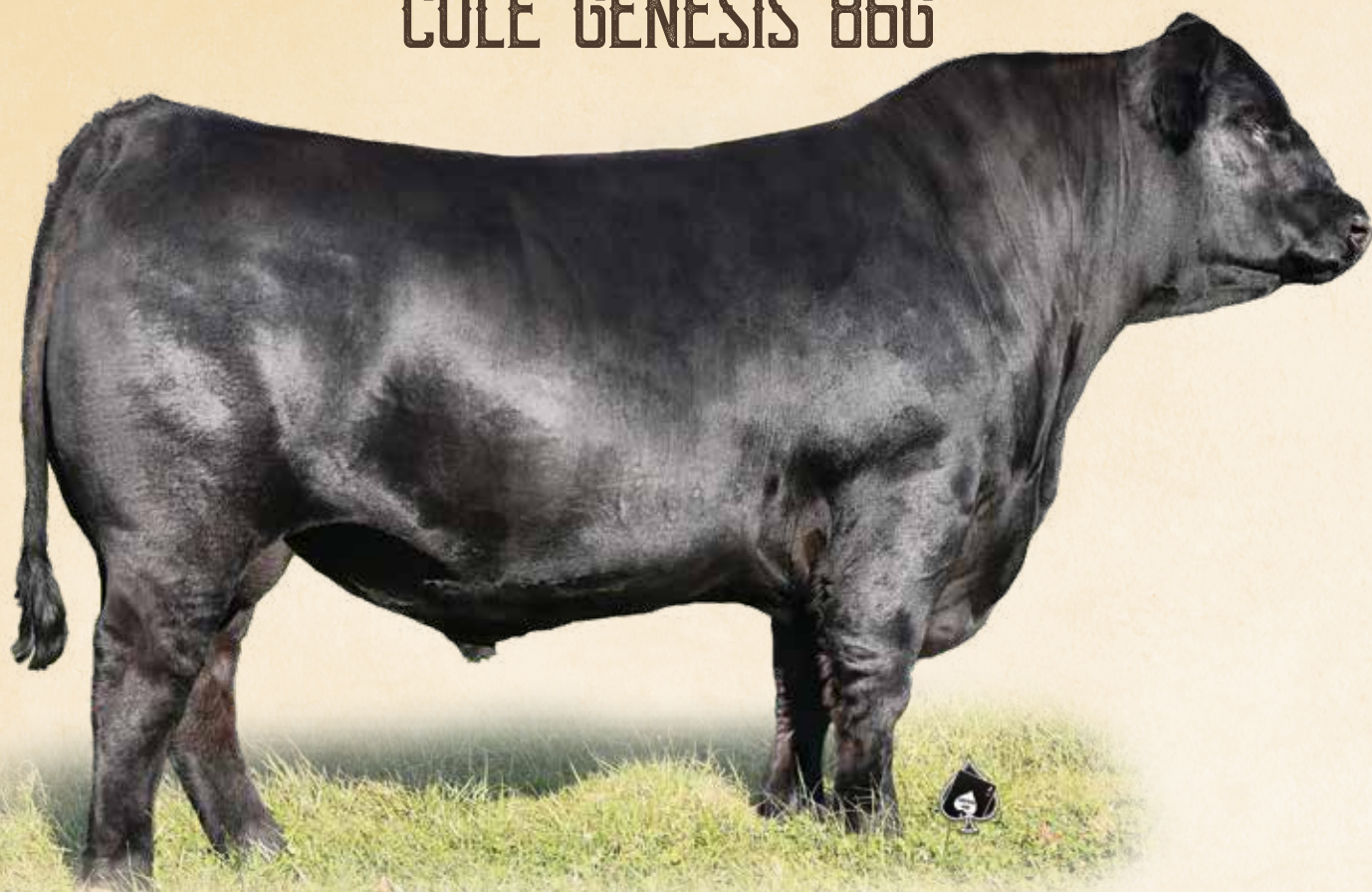
SOUTH REGION - DeRon Heldermon
405/850-5102, deron@limousin365.com

The Site That Never Sleeps

405.260.3775 • www.limousin365.com • Like us on 

45TH ANNUAL BULL SALE

COLE GENESIS 86G



From the day he was born COLE Genesis 86G has impressed. And now that he is an established, prominent AI sire, all of those high expectations have become a reality. Genesis combines a notable pedigree, a balanced EPD profile and eye catching phenotype. His sire, HUNT Credentials 37C ET, has proven to transmit progeny that pairs big data with stand out phenotypes. His donor dam is COLE Miss Xrated 354A who has an impressive resume producing two other maternal brothers who are both notable AI sires and past sale highlights, COLE Cadillac 05C and COLE Homerun 51H ET. On paper Genesis has numbers worth studying—take note of his breed leading EPDs for 11 economically important traits. Aside from his numerical advantages, phenotypically he is heavily structured, big bodied and level topped, with extra muscle expression while being free moving off both ends of his skeleton. What's more he is homozygous polled and a Purebred. This remarkable individual can predictably advance your breeding program to new heights. Owned with Symens Brothers.

Just like their father, the Genesis sons selling this year excel both on paper and in the real world. As a group, they posted an impressive REA Ratio of 102 coupled with an IMF Ratio of 108. Combine that with top 35% EPD rankings for CE, BW, WW, YW, MK, CM, DC, CW, MB & \$MI.

SONS SELLING

12	15	59
13	52	68
14	53	85

	CE	BW	WW	YW	MK	CM	SC	DC	YG	CW	RE	MB	\$MI
EPD	16	-0.9	81	116	36	10	0.6	18	-0.16	44	0.77	0.65	79
Rank	10	15	10	15	1	10	30	10	>95	5	0.47	1	1

Act. BW: 76 | Adj. WW: 792 | Adj. YW: 1394 | SC: 39.8 | UFAT: 0.54 | UREA: 14.06 | UIMF: 4.11



COLE GENESIS 86G SON - SELLS AS LOT 12



COLE GENESIS 86G SON - SELLS AS LOT 13

REFERENCE SIRES



COLE EARNING POWER 82H



COLE EXPLORER 22E



COLE FORTUNE 12F

	CD	BW	WW	YW	MK	CM	SC	DC	YG	CW	RE	MB	\$MI
COLE AVIATOR 80F LIM-FLEX(54/48.2) - MAGS AVIATOR x COLE MISS TRAVELER 012X	13	-0.6	68	113	21	7	-0.1	16	-0.01	22	0.41	0.25	60
COLE BACKSTAGE 04E LIM-FLEX(75/67) - SYES BACKSTAGE 466B x COLE MISS REGIS 540C	14	-0.7	66	101	18	6	0.8	9	-0.06	32	0.33	-0.07	48
COLE EARNING POWER 82H PUREBRED(90/75.4) - AHCC EARNING POWER 900E ET x COLE MISS XRATED 553C	17	-0.6	73	111	21	12	1.5	14	-0.27	36	0.85	0.19	61
COLE EXPENSE 77E ET PUREBRED(100/89.2) - AHCC XPENSE ACCOUNT X516 x COLE BEAUTY 276Z	8	2.6	51	88	18	2	0.9	11	-0.48	17	0.92	0.28	60
COLE EXPLORER 22E PUREBRED(87/77) - COLE ARCHITECT 08A x COLE MISS WINDFALL 126Y	8	1.5	96	138	9	4	0.6	9	-0.40	47	1.29	-0.38	48
COLE FORTUNE 12F PERCENTAGE(81/71.3) - COLE CADILLAC 05C x COLE MISS AUSTIN 3157A	20	-4.8	69	112	21	11	-0.3	12	-0.12	26	0.75	0.08	55
COLE GENESIS 86G PUREBRED(87/77.3) - HUNT CREDENTIALS 37C ET x COLE MISS XRATED 354A	16	-0.9	81	116	36	10	0.6	18	-0.16	44	0.77	0.65	79
COLE HALFBACK 08H PERCENTAGE(84/72.8) - AHCC EARNING POWER 900E ET x COLE MISS AUSTIN 499B	8	2.5	84	142	21	6	1.7	15	-0.29	51	1.08	0.06	60
COLE HOMERUN 51H ET PERCENTAGE(81/70.3) - CELL ENVISION 7023E x COLE MISS XRATED 354A	10	2.3	92	138	25	6	1.8	14	-0.32	51	1.26	0.20	68
AHCC EARNING POWER 900E ET PERCENTAGE(81/67.9) - MAGS ANCHOR x LVLS 9066U	12	1.2	84	141	17	10	2.4	17	-0.19	56	0.89	0.38	71
AHCC EASY RIDER 5594E LIM-FLEX(56/49.7) - ELMW ALFALFA 103B x AHCC MISS Y AXIS C5594 ET	12	-0.4	91	140	27	9	0.7	14	-0.18	31	0.86	0.39	73
CELL ENVISION 7023E PUREBRED(87/75.7) - AHCC BARN BURNER B907 x PBRs ZSA ZSA 246Z	8	2.7	105	170	20	5	2.4	22	-0.42	62	1.50	0.00	65
SYES ENCORE 315E PUREBRED(100/90.2) - LFLC CHECKING ACCOUNT 701C x MISS SYES ROSCOE 316X	18	-2.7	71	104	18	10	0.8	17	-0.78	26	1.52	-0.38	44
TMCK CASH FLOW 247C LIM-FLEX(43/39.2) - MAGS ALI x TMCK NINA 17X	6	3.3	102	165	29	4	1.5	19	0.15	68	0.71	0.36	73
TREF HARDCORE 204H PUREBRED(96/87.7) - TOMV DIESEL 619D x TREF DELANEY 204D	7	3.7	93	156	27	6	-0.1	16	-0.58	55	1.54	-0.30	52
WZRK GAME CHANGER 4015G PUREBRED(100/89) - HUNT CREDENTIALS 37C ET x WZRK MISS TUFFENUFF 4015B	11	0.4	75	116	34	8	1.5	19	-0.27	56	0.81	0.26	64



COLE GENESIS 86G



CELL ENVISION 7023E



WZRK GAME CHANGER 4015G



Marketing Management

2005 Ruhl Drive
Guthrie, OK 73049

45th Annual
COLEMAN LIMOUSIN RANCH
Production Sale **TUESDAY, APRIL 4, 2023**
1 p.m. MST - Five Valleys Livestock - Missoula, MT

